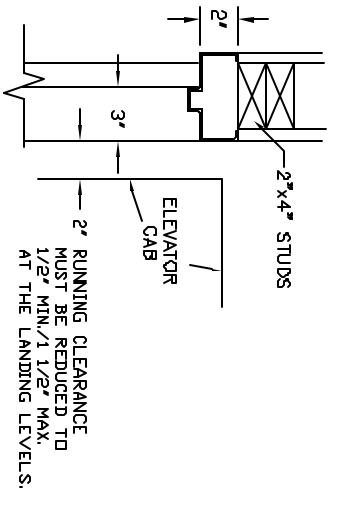
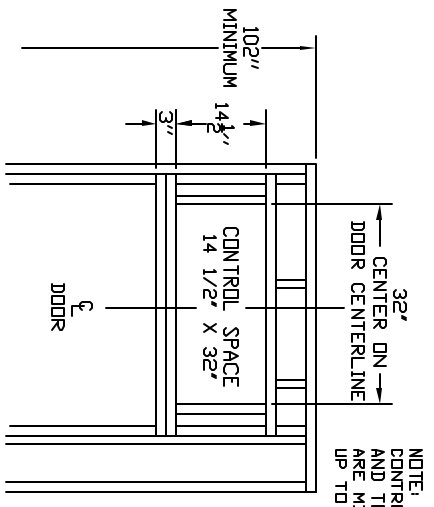


NOTE: WHEN STUD AND SHEETROCK CONSTRUCTION IS USED ON THE RAIL BRACKET SUPPORT WALL DBL 2 X 6 STUDDING IS NEEDED TO MOUNT THE RAIL BRACKETS. DO NOT USE METAL STUDS.

**DETAIL**



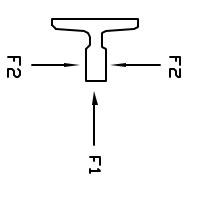
**DOOR FRAME DETAIL**



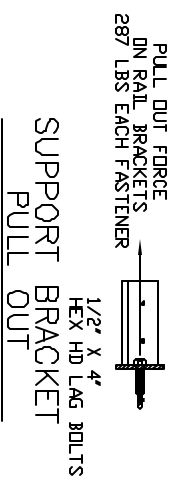
**UPPER DOOR OVERHEAD FRAMING DETAIL**

NOTE: CONTROL SPACE MUST BE SQUARE AND TO SIZE. GIVEN DIMENSIONS ARE MINIMUM SIZE AND MAY BE UP TO 1/8\"/>

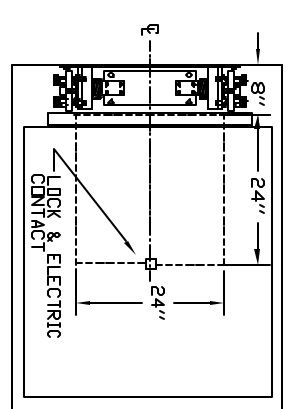
**RAIL REACTIONS**



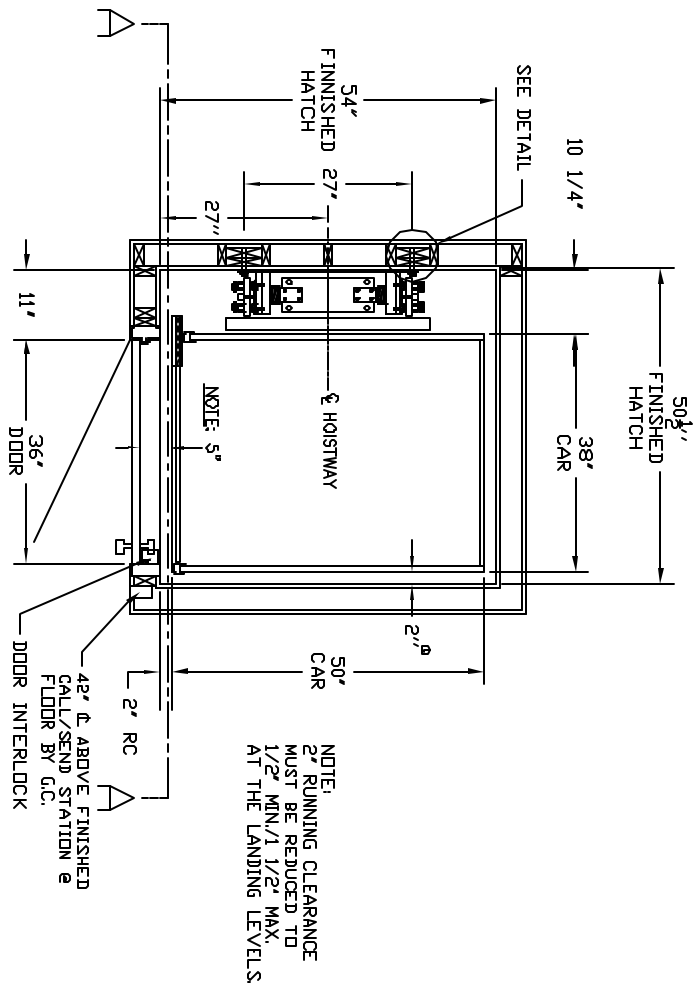
F1 = 242 LBF  
F2 = 370 LBF



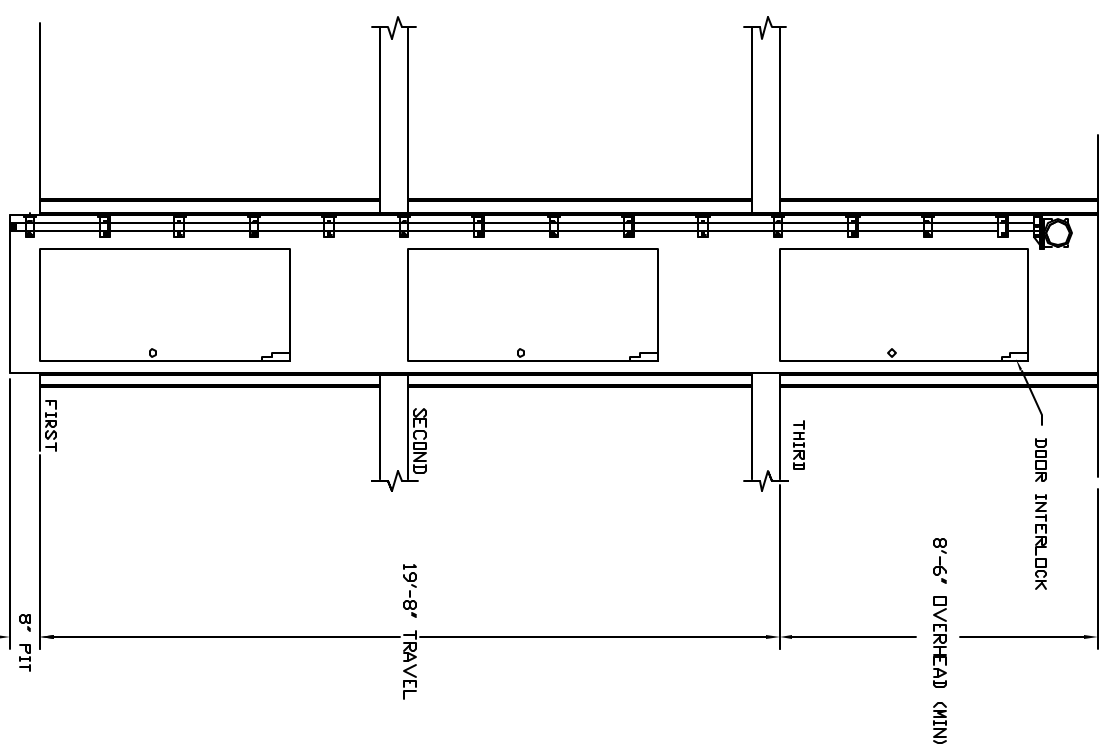
**SUPPORT BRACKET PULL OUT**



**ACCESS HATCH**

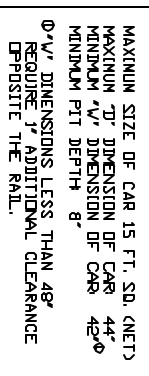


**HOISTWAY LAYOUT**



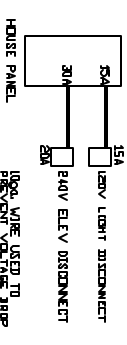
**SECTION A-A**

- TECHNICAL DATA**
- EACH RAIL BRACKET FASTENER SHALL PROVIDE A MINIMUM PULL OUT OF 287 LBS.
  - RAIL BRACKET SPACING SHALL BE DETERMINED BY THE MANUFACTURER.
  - RAIL FASTENING MUST BE ABLE TO SUPPORT THE LOADS IMPOSED. SEE RAIL REACTIONS AND SUPPORT BRACKET PULLOUTS ON MAIN BODY OF DRAWING. BRACKETS ARE PRE-DRILLED.
  - PIT FLOOR SHALL BE CONSTRUCTED TO WITHSTAND AN IMPACT LOAD OF 3123 LBS.



**ELEVATOR NOTES**

- NOTICE TO ELECTRICAL CONTRACTOR: ALL ELECTRICAL WIRING MUST BE DONE BY A JOURNEYPERMAN MECHANIC AND MUST MEET ALL NATIONAL, STATE, AND LOCAL CODES.
  - BRING (3) #10 W/GND FROM ELEVATOR DISCONNECT SWITCH LOCATED NEAR RESIDENCE JUNCTION BOX TO THE TOP OF THE HOISTWAY. DISCONNECT IS SUPPLIED BY OTHERS AND MUST BE LOCKABLE.
  - BRING (2) #12 W/GND FROM A SEPARATE DEDICATED DISCONNECT NEAR THE RESIDENCE JUNCTION BOX FOR THE CAR LIGHT, UTILITY LIGHT, GFI, AND LOCKABLE DISCONNECT TO BE SUPPLIED BY OTHERS.
  - REQUIRED LOW VOLTAGE WIRING IS SUPPLIED BY MANUFACTURER. ALL EXTENSIONS ADDITIONS, ETC. SHALL BE DONE WITH THE SAME SIZE AND TYPE OF WIRE AS ORIGINALLY SUPPLIED BY THE MANUFACTURER.
- NOTICE TO GC:
  - ALL HOISTWAY CONSTRUCTION MUST COMPLY WITH NATIONAL, STATE, AND LOCAL CODES. HOISTWAY MUST BE PLUMB AND STRAIGHT FROM TOP TO BOTTOM WITH NO PROJECTIONS INTO THE HOISTWAY.
  - PLEASE ADVISE INCOBA OF ANY CHANGES NEEDED TO THE DRAWING FOR COMPLIANCE IN YOUR AREA.
  - NO OTHER WIRING OR PIPING NOT PART OF THE ELEVATOR SYSTEM SHALL BE PLACED IN THE HOISTWAY.
  - SWING TYPE SHUT DOORS WITH LATCHING HARDWARE TO BE SUPPLIED BY OTHERS.
  - PROVIDE A 24\"/>
- NOTICE TO INSTALLER (MANDATORY EQUIPMENT)
  - A TELEPHONE LINE SHALL BE SUPPLIED TO THE TOP OF THE HOISTWAY AND SHALL BE CONNECTED TO A 24 HOUR CENTRAL EXCHANGE.
  - ALL MEANS FOR ACCESS TO EQUIPMENT OR HOISTWAY SHALL BE PROVIDED WITH A LOCK AND ELECTRICAL CONTACT. ALL SHUT DOORS MUST BE INTERLOCKED.



**SPECIFICATIONS "ELEVETTE"**

MRL TRACTION DRIVE  
CAR SIZE OVERALL: 39\"/>

**SHOP DRAWING NAME**

XXXX RESIDENCE  
ARCHITECT  
GENERAL CONTRACTOR  
EQUIPMENT INSTALLED BY  
XXXX  
XXXX  
XXXX

**INCLINATOR COMPANY OF AMERICA**  
HARRISBURG, PA

APPROVAL #	REV. LEVEL
INCOBA JOB #	REV. DATE
DRAWN BY	DWG. DATE
FHM	02/10/06

DRAWING IDENTIFICATION NUMBERS  
**TYPICAL**

APPROVED  
APPROVED W/CHANGES  
CHANGE/RESUBMIT