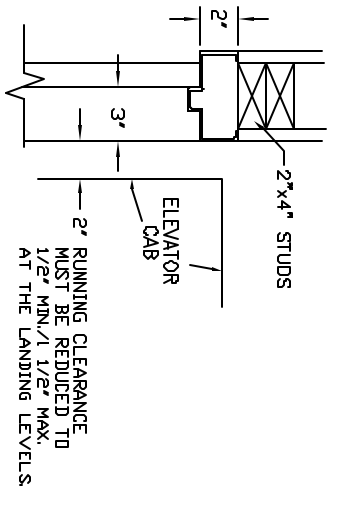
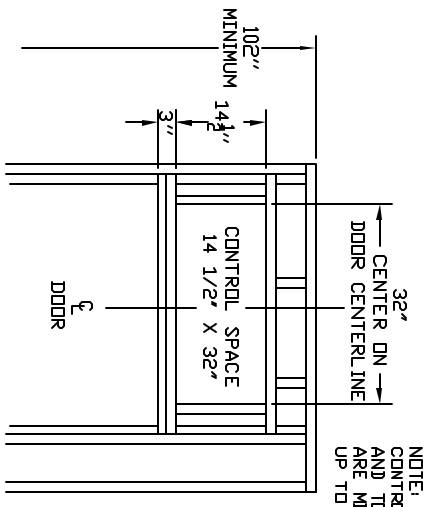


NOTE: WHEN STUD AND SHEETROCK CONSTRUCTION IS USED ON THE RAIL BRACKET SUPPORT WALL IS BL 2 X 6 STUDING IS NEEDED TO MOUNT THE RAIL BRACKETS. DO NOT USE METAL STUDS.

DETAIL

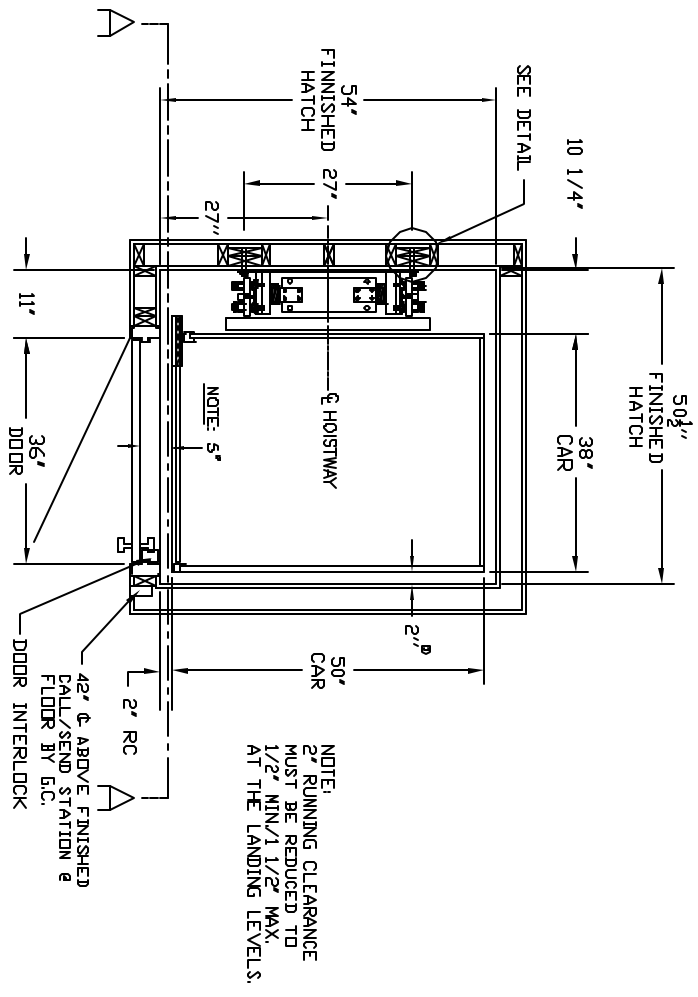


DOOR FRAME DETAIL



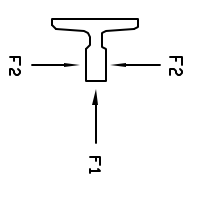
NOTE: CONTROL SPACE MUST BE SQUARE AND TO SIZE. GIVEN DIMENSIONS ARE MINIMUM SIZE AND MAY BE UP TO 1/8\"/>

UPPER DOOR OVERHEAD FRAMING DETAIL



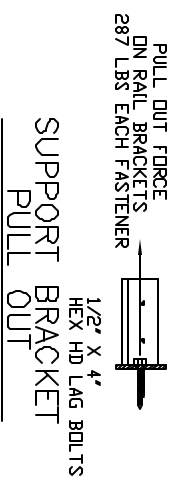
NOTE: 2\"/>

HOISTWAY LAYOUT

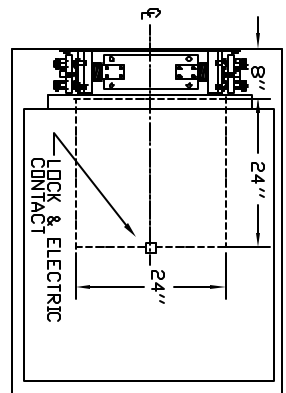


F1 = 242 LBF
F2 = 370 LBF

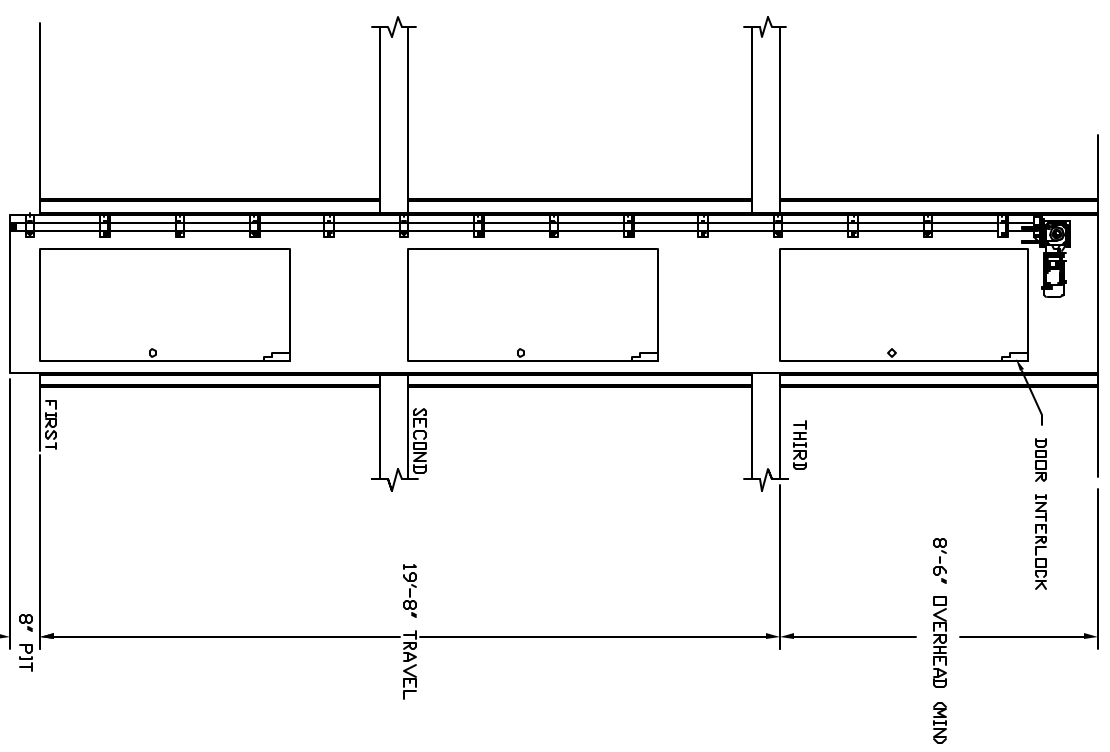
RAIL REACTIONS



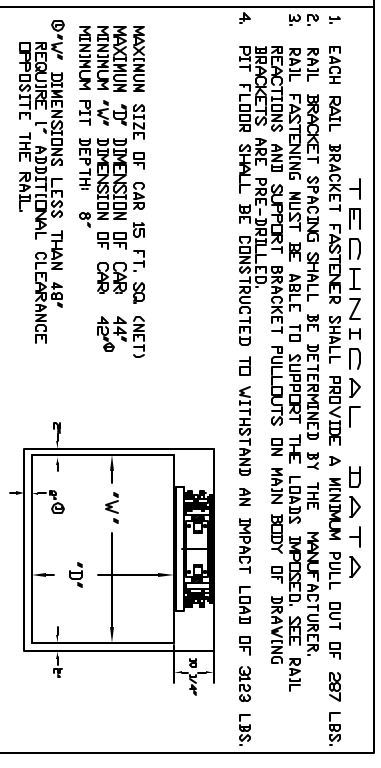
PULL OUT FORCE ON RAIL BRACKETS 287 LBS EACH FASTENER
HEX HD LAG BOLTS



ACCESS HATCH



SECTION A-A

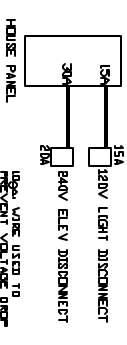


TECHNICAL DATA

- EACH RAIL BRACKET FASTENER SHALL PROVIDE A MINIMUM PULL OUT OF 287 LBS.
- RAIL BRACKET SPACING SHALL BE DETERMINED BY THE MANUFACTURER.
- RAIL FASTENING MUST BE ABLE TO SUPPORT THE LOADS IMPOSED. SEE RAIL REACTIONS AND SUPPORT BRACKET PULLOUTS ON MAIN BODY OF DRAWING. BRACKETS ARE PRE-DRILLED.
- PIT FLOOR SHALL BE CONSTRUCTED TO WITHSTAND AN IMPACT LOAD OF 3125 LBS.

ELEVATOR NOTES

- NOTICE TO ELECTRICAL CONTRACTOR:
 - ALL ELECTRICAL WIRING MUST BE DONE BY A JOURNEYPERMAN MECHANIC AND MUST MEET ALL NATIONAL, STATE, AND LOCAL CODES.
 - BRING (2) #10 W/GND FROM ELEVATOR DISCONNECT SWITCH LOCATED NEAR RESIDENCE JUNCTION PANEL (240V NEUTRAL, GROUND) TO THE TOP OF THE HOISTWAY. DISCONNECT IS SUPPLIED BY OTHERS AND MUST BE LOCKABLE.
 - BRING (2) #12 W/GND FROM A SEPARATE DEDICATED DISCONNECT NEAR THE RESIDENCE JUNCTION PANEL FOR THE CAR LIGHT, UTILITY LIGHT & GFI RECEPTACLE TO THE TOP OF THE HOISTWAY. UTILITY LIGHT, GFI RECEPTACLE, AND LOCKABLE DISCONNECT TO BE SUPPLIED BY OTHERS.
 - REQUIRED LOW VOLTAGE WIRING IS SUPPLIED BY MANUFACTURER. ALL EXTENSIONS ADDITIONS, ETC. SHALL BE DONE WITH THE SAME SIZE AND TYPE OF WIRE AS ORIGINALLY SUPPLIED BY THE MANUFACTURER.
- NOTICE TO E.C.
 - 2HP, MOTOR 208/240 VOLTS 3 PHASE 60 CYCLE RUNS ON SINGLE PHASED 30 AMP MAIN LINE BREAKER



- NOTICE TO INSTALLER (MANDATORY EQUIPMENT)
 - A TELEPHONE LINE SHALL BE SUPPLIED TO THE TOP OF THE HOISTWAY AND SHALL BE CONNECTED TO A 24 HOUR CENTRAL EXCHANGE.
 - ALL MEANS FOR ACCESS TO EQUIPMENT OR HOISTWAY SHALL BE PROVIDED WITH A LOCK AND ELECTRICAL CONTACT. ALL SHAFT DOORS MUST BE INTERLOCKED.
- NOTICE TO MANUFACTURER SUPPLIED CAR AND EQUIPMENT OPTIONS ARE NOTED ON THE CONFORMING ORDER SHEET.

SPECIFICATIONS "ELEVETTE"

MRL CHAIN DRIVE
CAR SIZE OVERALL: 38" D X 30" W X 71" H LANDINGS SERVED: 3
CAPACITY: 900 LBS. (INDIA CODES) 5
SUSP MEANS: (2) #60 ROLLER CHAINS MAX. SPEED: 40 FPM

SHOP DRAWING NAME

XXXX RESIDENCE
ARCHITECT
GENERAL CONTRACTOR
EQUIPMENT INSTALLED BY
XXXX
XXXX
XXXX

INCLINATOR COMPANY OF AMERICA
HARRISBURG, PA

APPROVAL	REV. LEVEL
INCHES JOB #	REV. DATE
DRAWN BY: FMH	DWG. DATE: 02/10/06

DRAWING IDENTIFICATION NUMBER
TYPICAL

APPROVED
APPROVED W/CHANGES
CHANGE/RESUBMIT