

SHOP DRAWING NAME

TYPICAL

ARCHITECT

GENERAL CONTRACTOR

EQUIPMENT SUPPLIED BY:
TYPICAL

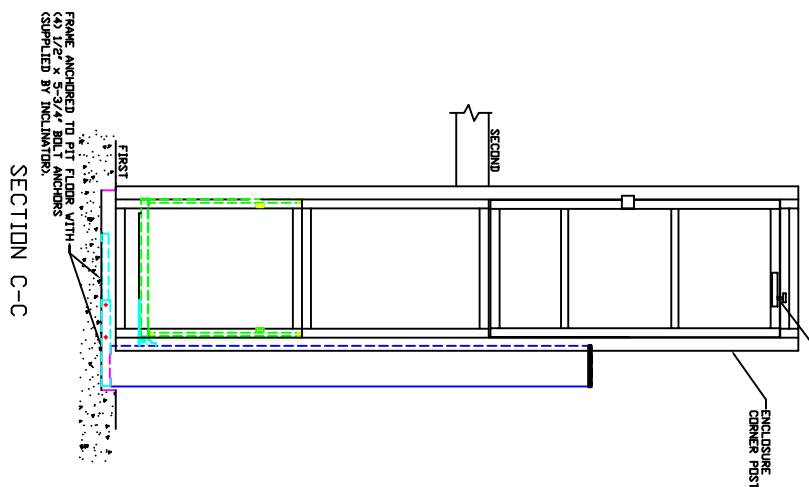
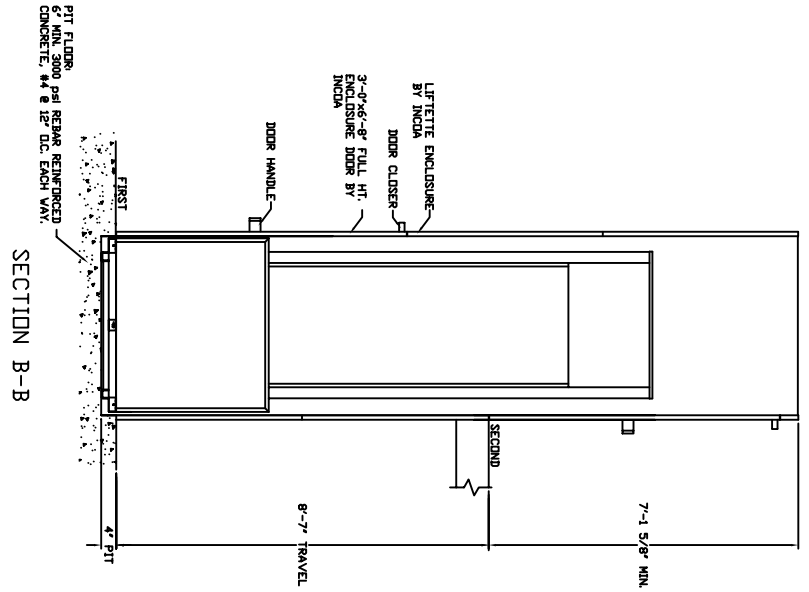
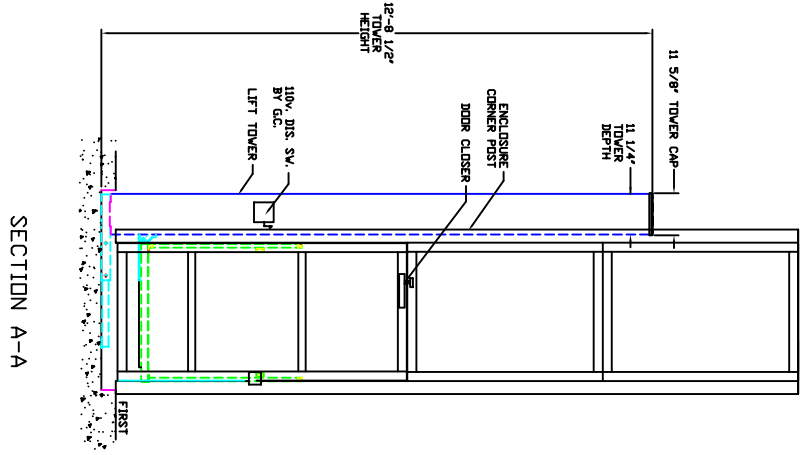
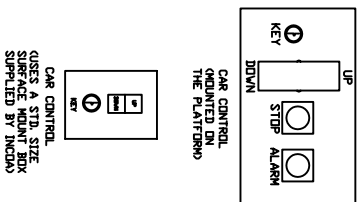
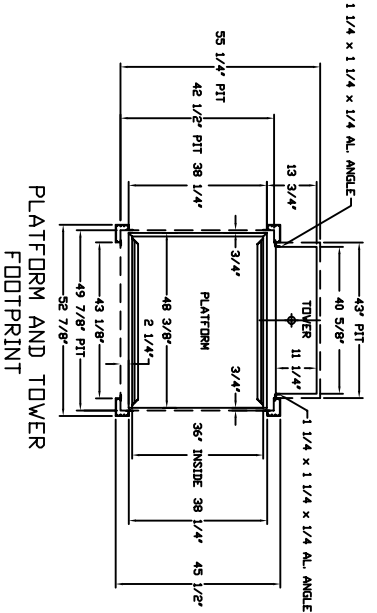
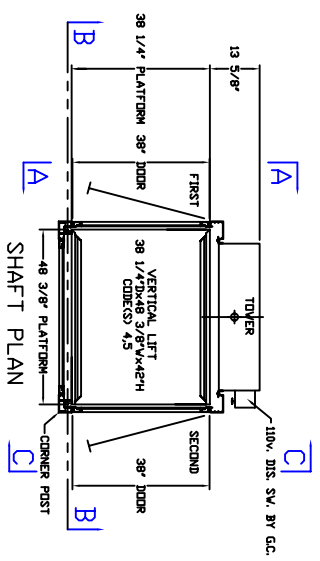
SPECIFICATIONS

L-120
2 LANDING
CAR 38 1/4"x48 3/8"x42"H
CODESS 4.5
CAPACITY 750 LBS. AT 10 F.P.M.
FINISH BEIGE

- ALL DOORS MUST BE INTERLOCKED
 - AUTO FOLD RAMP
 - STAIRWAY RAMP INTERLOCK
 - PLATFORM GATE WITH INTERLOCK
 - EMERGENCY STOP
 - MANUAL LOWERING MECHANISM
 - INSTANT REVERSE
 - LIGHT SWITCHES
 - ENCLOSURE DOORS BY INCOA
 - ENCLOSURE BY INCOA
- NOTICE TO ELECTRICAL CONTRACTOR:
INSTALL 120V SINGLE PHASE
DISCONNECT SWITCH
1-1/2" MIN. 120V SINGLE PHASE
20 AMP MAIN LINE FUSE

INCOA JOB #
DEALER P.O. #
DRAWING BY
DATE

XXXXXX



SECTION A-A

SECTION B-B

SECTION C-C

PIT FLOOR,
5' MIN. 3000 PSI REBAR REINFORCED
CONCRETE, #4 @ 12" O.C. EACH WAY.

FRAME ANCHORED TO FLOOR WITH
1/2" DIA. x 5-3/4" LONG ANCHORS
(SUPPLIED BY INCLINATOR).