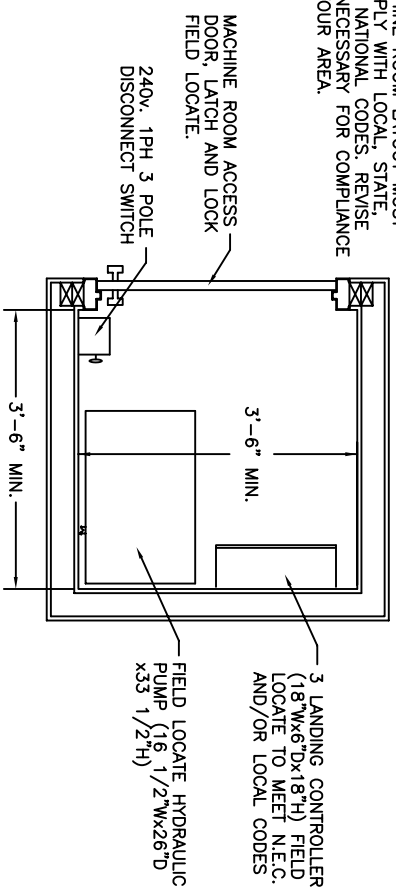


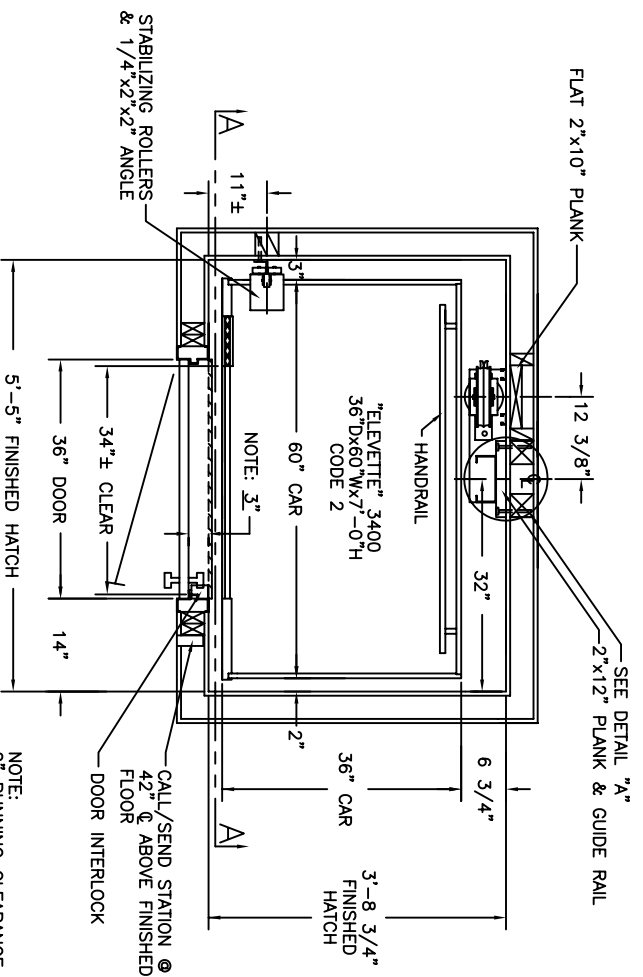
- TECHNICAL DATA:**
1. MAXIMUM RAIL MOUNTING REACTION FORCE: STATIC = 1,030 LBS. IMPACT = 2,060 LBS.
  2. RAIL FASTENING TO 2"x12" PLANK #14 x 1 3/4" TYPE A S.M.S. RAIL IS PRE-DRILLED AT FACTORY.
  3. BOLT FASTENING OF CAR TO TROLLEY 1/2" - 13 x 4" SOCKET HD CAP SCREWS

SILL DETAIL

NOTE: MACHINE ROOM LAYOUT MUST COMPLY WITH LOCAL, STATE AND NATIONAL CODES. REVISE AS NECESSARY FOR COMPLIANCE IN YOUR AREA.

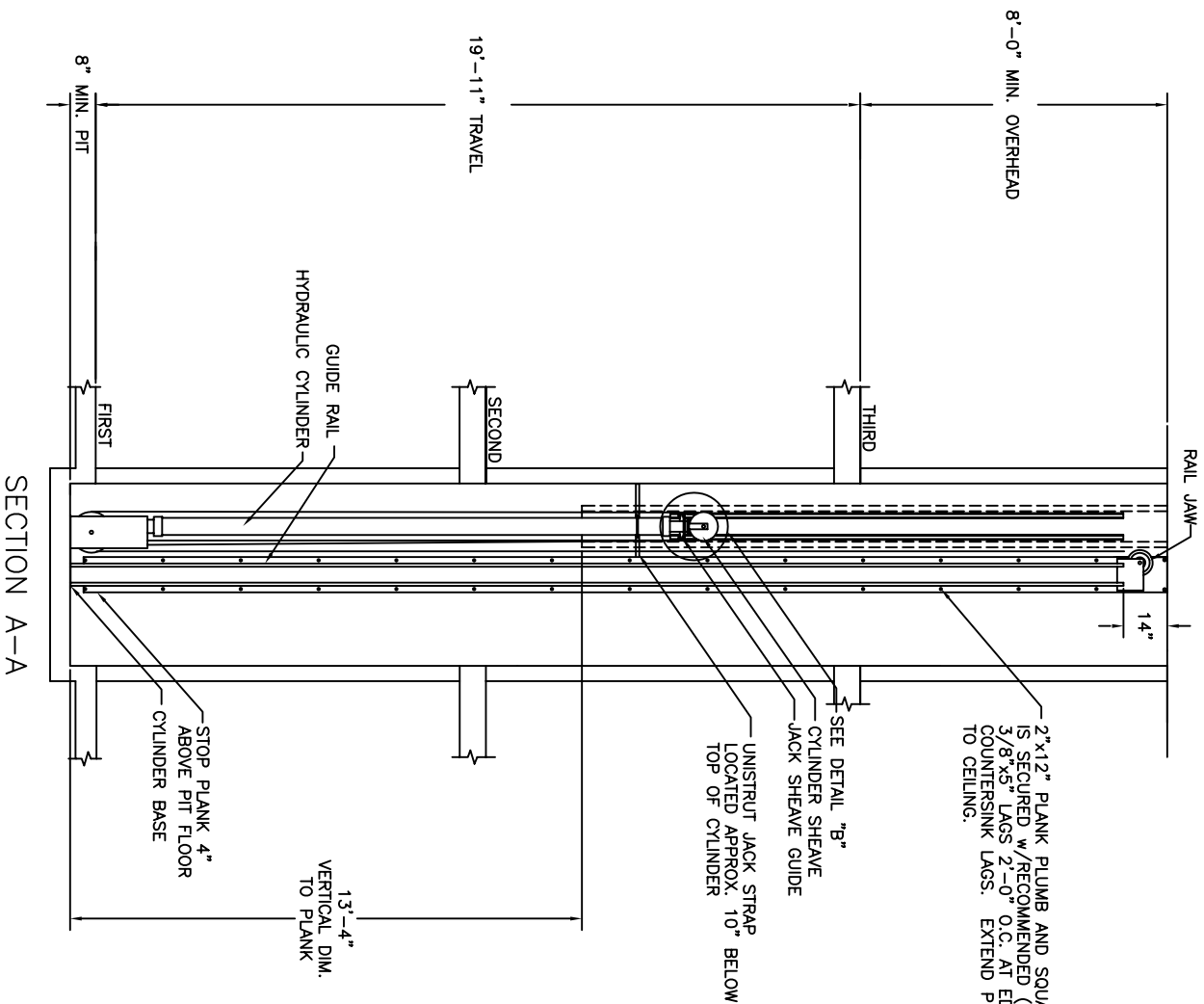


MACHINE ROOM PLAN (LOCATED BEHIND RAIL, OVERHEAD, ADJACENT, OR REMOTE : CONSULT FACTORY)



SHAFT PLAN

NOTE: 2" RUNNING CLEARANCE MUST BE REDUCED TO 1 1/2" MIN./1 1/2" MAX. AT THE LANDING LEVELS.



SECTION A-A

**INCLINATOR COMPANY OF AMERICA**  
 HARRISBURG, PA

SHOP DRAWING NAME: TYPICAL  
 ARCHITECT: \_\_\_\_\_

GENERAL CONTRACTOR: \_\_\_\_\_

EQUIPMENT INSTALLED BY: \_\_\_\_\_

TYPICAL

- SPECIFICATIONS**
- 3 LANDING  
 HYDRARIDE-HIH  
 "ELEVETTE" 3400
- CAR 36"Dx60"Wx7'-0"H OVERALL DIMS.  
 CODE(S) 2  
 CAPACITY 950 LBS. AT 36 F.P.M. ±4  
 2 WIRE ROPES 13,200 LBS. T.S. IMP FLOW  
 STEEL 3/8" x 8 x 19 WSC  
 CAR CONSTRUCTION: 3/4" HRDWD VENEER  
 COLOR/PANEL SELECTION: ADVISE

- ALL DOORS INTERLOCKED - EM4
  - TOP OUTLET JACK
  - JACK SPLICE
  - PHONE CORD
  - PHONE BOX -  BRASS  STAINLESS
  - FLOATING GATE
  - COLLAPSIBLE GATE FIN. - ADVISE
  - GATE SAFETY BAR
  - D.A. GATE LOCK
  - ACCORDIAN FOLD GATE
  - CAR CONTROL PLATE FIN. - ADVISE
  - REMOTE PLATES FINISH - ADVISE
  - C.O.P. HEIGHT -  STD.  WHEELCHAIR
  - LED BUTTONS
  - IN USE LIGHT
  - ARRIVAL LIGHTS
  - KEYSWITCH IN CAR
  - STANDARD ALARM
  - EMERGENCY LIGHT AND BELL
  - CONSTANT PRESSURE
  - DOOR OPEN ALARM
  - HONING DEVICE
  - LAMP FIXTURE - ADVISE
  - AUTO CAB LIGHT
  - HANDRAIL - ADVISE
  - FLOOR - ADVISE
  - STABILIZER
  - HALF TROLLEY
  - SOLID STOP
  - BUFFER SPRING D6" O12"
- NOTES:  
 1. NOTICE TO ELECTRICAL CONTRACTOR: BRING 4 #10 WIRES TO DISCONNECT SWITCH + GROUND: (2)120V. (2)40PWR, (1)120V. (LIGHT). (1)NEUTRAL  
 2. 1/2 H.P. MOTOR 240 VOLTS 1 PHASE 60 CYCLE  
 F.L.A. 10  
 30 AMP MAIN LINE FUSE  
 2. NOTICE TO G.C.  
 ALL HOISTWAY AND MACHINE ROOM CONSTRUCTION MUST COMPLY WITH NATIONAL, STATE, AND LOCAL CODES. PLEASE ADVISE INCOA OF ANY CHANGES NEEDED TO THE DRAWING FOR COMPLIANCE IN YOUR AREA.  
 3. SWING TYPE SHAFT DOORS BY OTHERS.  
 4. NOTICE TO ELEVATOR CONTRACTOR OR HIS REPRESENTATIVE:  
 ALL ELECTRICAL WIRING MUST BE DONE BY A JOURNEYPERMAN MECHANIC AND MUST MEET NATIONAL, STATE, AND LOCAL CODES.