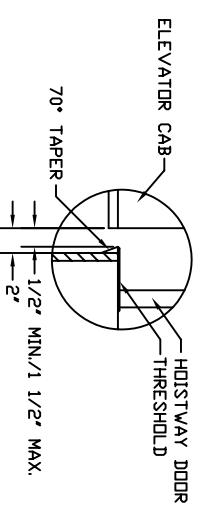
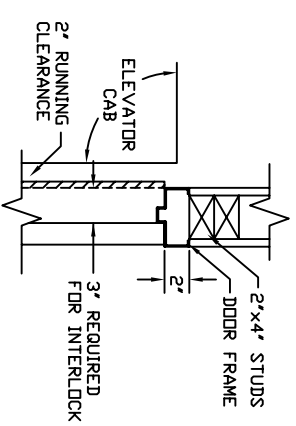


DETAIL

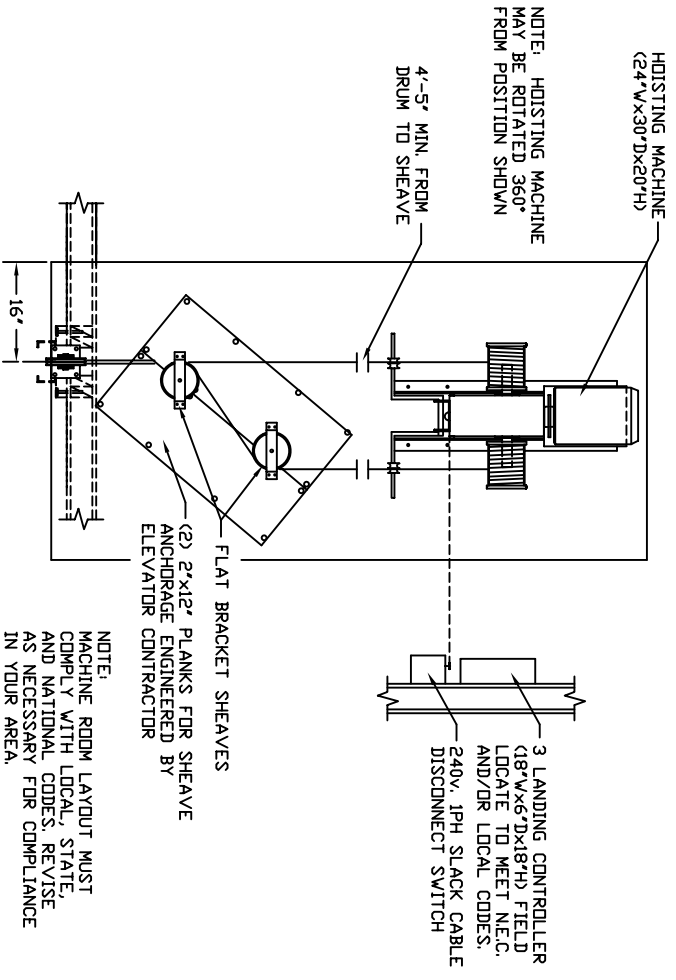


SILL DETAIL

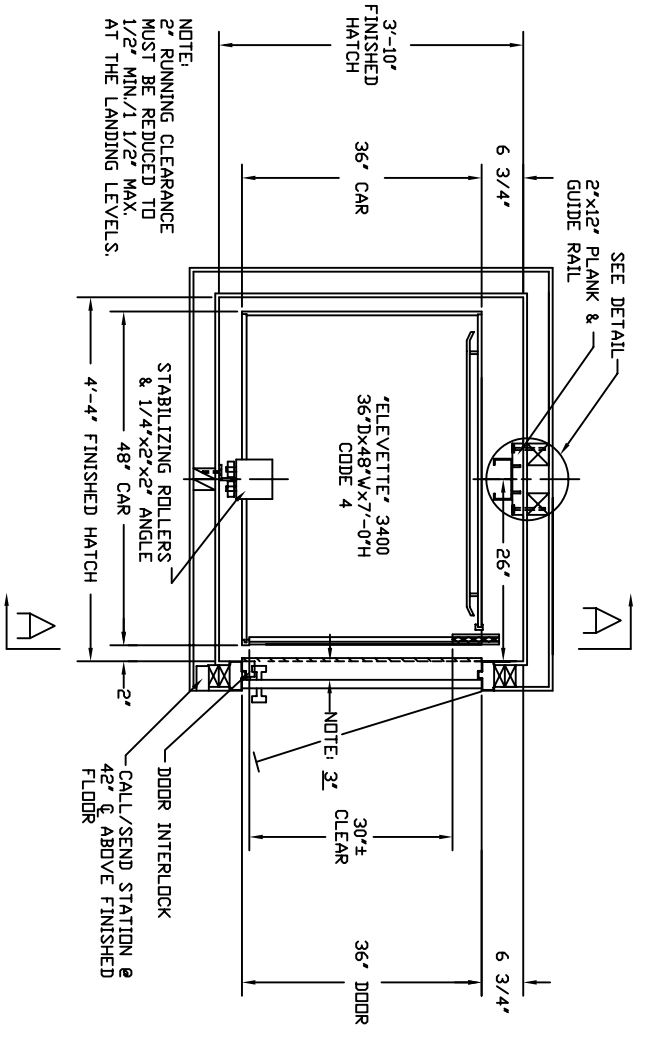


DOOR FRAME DETAIL

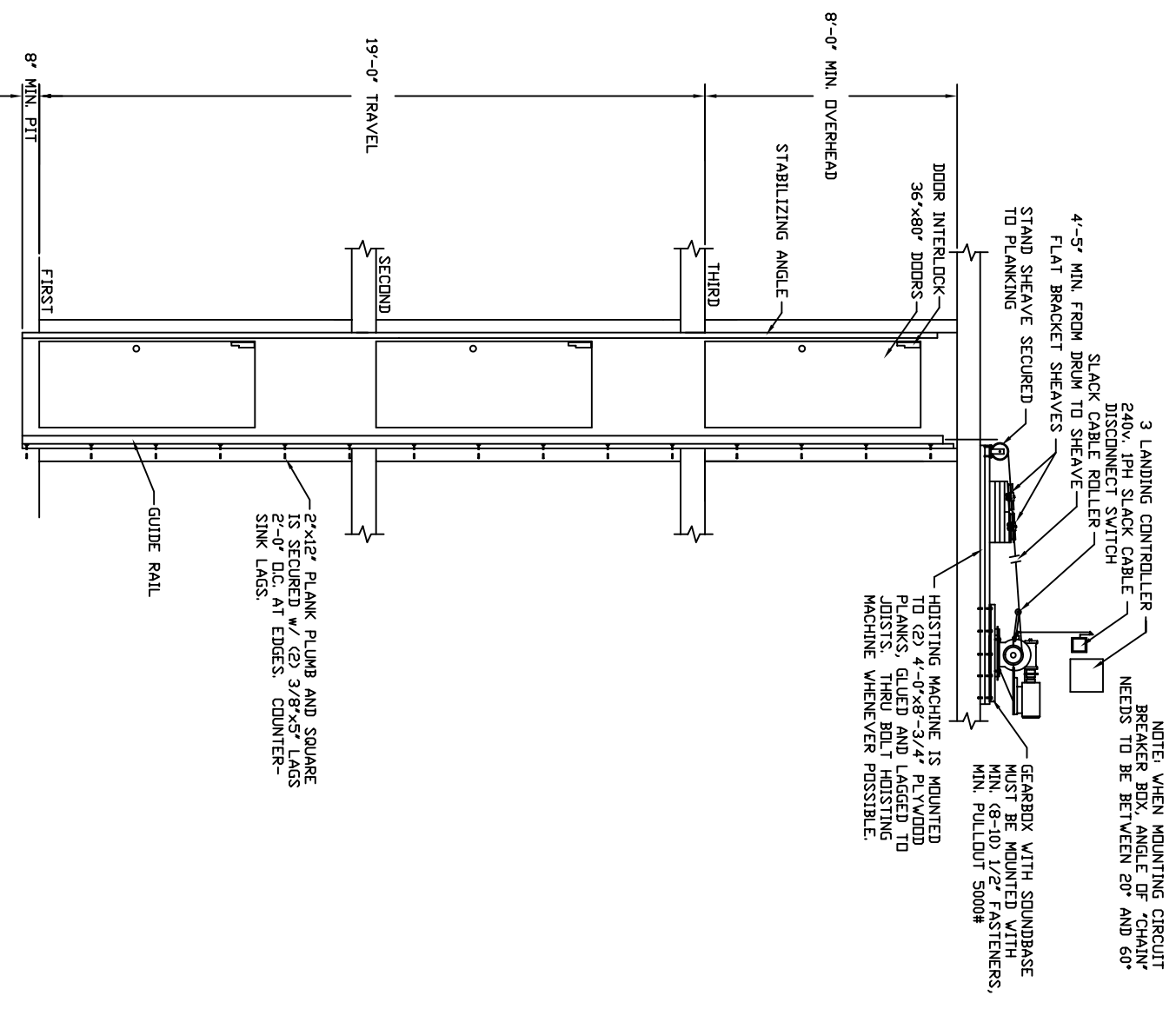
- TECHNICAL DATA**
1. REACTIONS ON ALL SHEAVES AND MOUNTINGS STATIC = 1,350 LBS. IMPACT = 2,700 LBS.
  2. FASTENING OF HOISTING MACHINE TO CONCRETE
  3. RAIL FASTENING TO 2"x12" PLANK #14 x 1 3/4" TYPE A S.M.S. RAIL IS PRE-DRILLED AT FACTORY.
  4. BOLT FASTENING OF CAR TO TROLLEY 1/2" - 13 x 4" SOCKET HD CAP SCREWS



MACHINE ROOM PLAN



SHAFT PLAN



SECTION A-A

EQUIPMENT INSTALLED BY  
**TYPICAL**

**SPECIFICATIONS**  
3 LANDING  
"ELEVETTE" 3400

CAR 36"x48"x7'-0" OVERALL DIMS.  
CAPACITY 4  
CAPACITY 750 LBS. AT 30 F.P.M.  
2 WIRE ROPES 13,200 LBS. T.S. 1/2" IMP. PLOW  
STEEL 3/8" x 8 x 19 WSC  
CAR CONSTRUCTION 3/4" HRVD VENEER  
COLOR/PANEL SELECTION ADVISE

- ALL DOORS INTERLOCKED - EM4
- SOUND BASE
- MACHINE LIMIT
- PHONE CORD
- PHONE BOX - BRASS STAINLESS
- FLOODING GATE
- COLLAPSIBLE GATE FIN. - ADVISE
- GATE SAFETY BAR
- DA. GATE LOCK
- ACCORDIAN FOLD GATE
- CAR CONTROL PLATE FIN. - ADVISE
- REMOTE PLATES FIN. - ADVISE
- CUP HEIGHT - OSTD. WHEELCHAIR LED BUTTONS
- IN USE LIGHT
- ARRIVAL LIGHTS
- KEYSWITCH IN CAR
- STANDARD ALARM
- EMERGENCY LIGHT AND BELL
- CONSTANT PRESSURE
- DOOR OPEN ALARM
- HONING DEVICE
- LAMP FIXTURE - ADVISE
- AUTO CAB LIGHT
- HANDRAIL - ADVISE
- FLOOR - ADVISE
- STABILIZER
- HALF TROLLEY
- SOLID STOP
- BUFFER SPRING 06" DIA2"
- SOFT START
- EBL

**NOTES:**

1. NOTICE TO ELECTRICAL CONTRACTOR: BRING 4 #10 WIRES TO DISCONNECT SWITCH + GROUND. (2)20V. (2)40VWR, (1)20V. LIGHT. (1)NEUTRAL.
2. 3 HP. MOTOR 240 VOLTS 3 PHASE 60 CYCLE RUNS ON 1 PHASE 10 AMPS RUN 50 AMPS START 30 AMP MAIN LINE FUSE
2. NOTICE TO G.C.
3. ALL HOISTWAY AND MACHINE ROOM CONSTRUCTION MUST COMPLY WITH NATIONAL, STATE, AND LOCAL CODES. PLEASE ADVISE INCA OF ANY CHANGES NEEDED TO THE DRAWING FOR COMPLIANCE IN YOUR AREA.
3. SWING TYPE SHAF T DOORS BY OTHERS. HIS REPRESENTATIVE.
4. NOTICE TO ELEVATOR CONTRACTOR OR ALL ELECTRICAL WIRING MUST BE DONE BY A JOURNEYMAN MECHANIC AND MUST MEET NATIONAL, STATE, AND LOCAL CODES.

INCA JOB #  
DEALER P.O. #  
DRAWN BY:  
DATE:  
DRAWING IDENTIFICATION NUMBER