

SHOP DRAWING NAME

TYPICAL

ARCHITECT

GENERAL CONTRACTOR

EQUIPMENT INSTALLED BY

TYPICAL

SPECIFICATIONS

3 LANDING
"ELEVETTE" 3400

CAR 36"Dx48"Wx7'-0"H OVERALL DIMS.
CODE(S) 2

CAPACITY 750 LBS. AT 30 F.P.M.

2 WIRE ROPES 13,200 LBS. T.S. IMP. PLOW
STEEL 3/8" x 8 x 19 WSC

CAR CONSTRUCTION: 3/4" HRDWD VENEER
COLDR/PANEL SELECTION: ADVISE

ALL DOORS INTERLOCKED - EM4

SOUND BASE

MACHINE LIMIT

PHONE COR'D

PHONE BOX - BRASS STAINLESS

FLOATING GATE

COLLAPSIBLE GATE FIN. - ADVISE

GATE SAFETY BAR

D.A. GATE LOCK

ACCORDIAN FOLD GATE

CAR CONTROL PLATE FIN. - ADVISE

REWOTE PLATES FINISH - ADVISE

C.D.P. HEIGHT - STD. DWHEELCHAIR
LED BUTTONS

IN USE LIGHT

ARRIVAL LIGHTS

KEYSWITCH IN CAR

STANDARD ALARM

EMERGENCY LIGHT AND BELL

CONSTANT PRESSURE

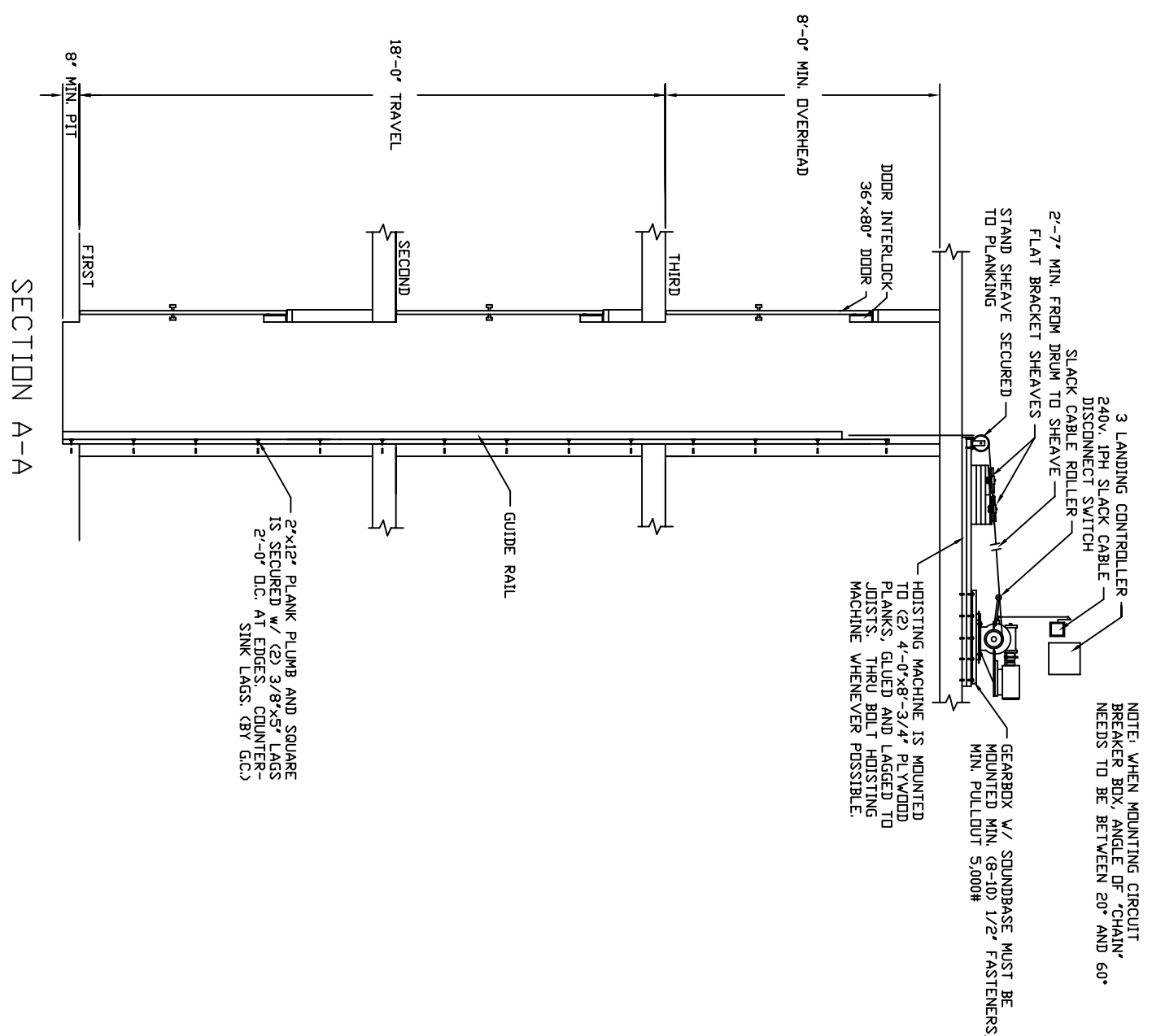
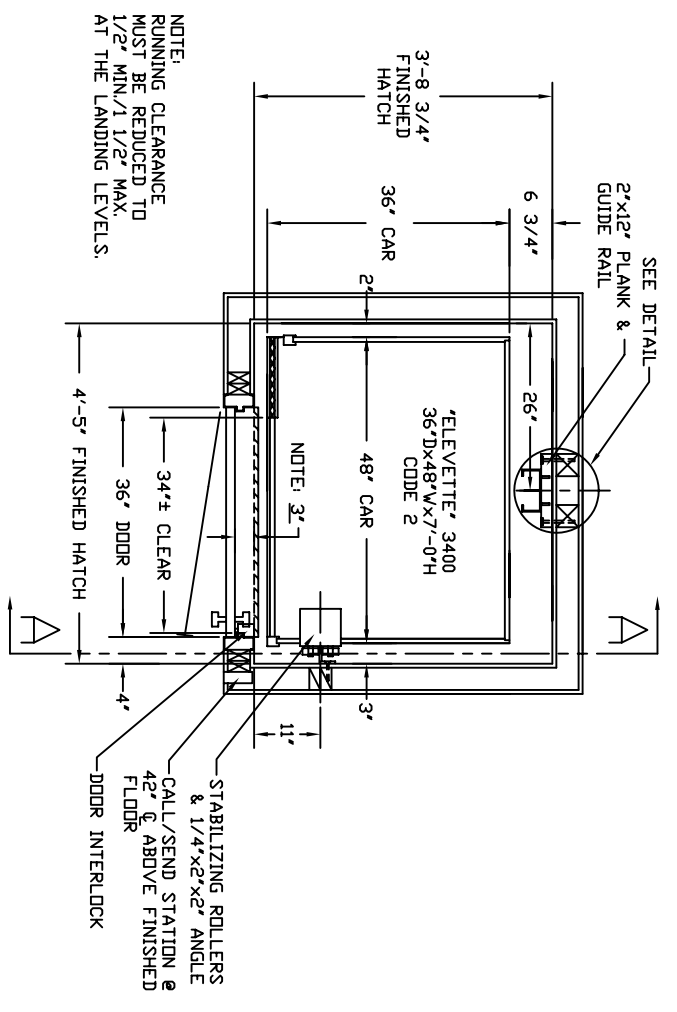
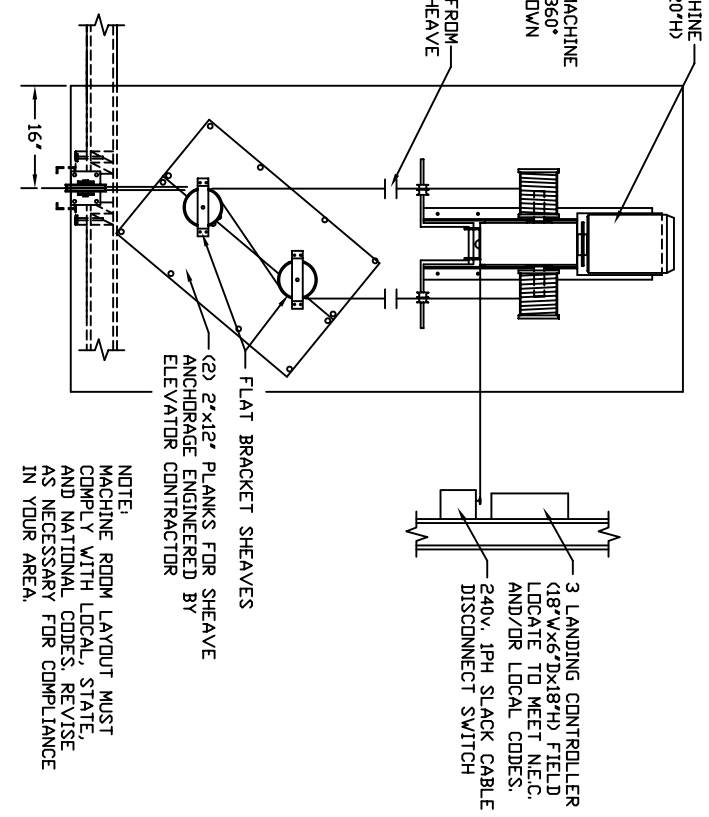
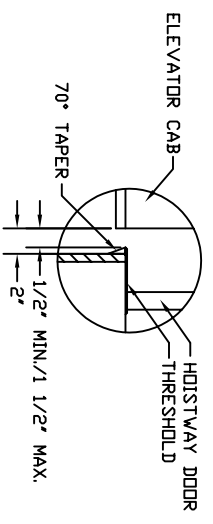
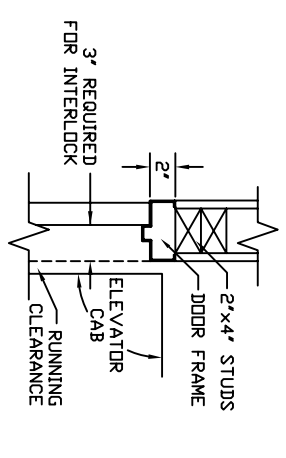
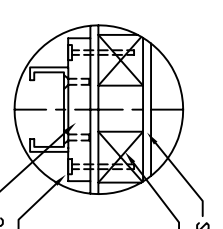
DOOR OPEN ALARM

HOMING DEVICE - ADVISE

LAMP FIXTURE - ADVISE

AUTO CAB LIGHT

- TECHNICAL DATA:**
- REACTIONS ON ALL SHEAVES AND MOUNTINGS
STATIC = 1,350 LBS.
IMPACT = 2,700 LBS.
 - FASTENING OF HOISTING MACHINE TO CONCRETE
1/2" x 3" HILTI BOLTS (OR EQUAL)
 - RAIL FASTENING TO 2"x12" PLANK
#14 x 1 3/4" TYPE A SMS. RAIL IS PRE-DRILLED AT FACTORY.
 - BOLT FASTENING OF CAR TO TROLLEY
1/2" - 13 x 4" SOCKET HD CAP SCREWS



INCDA JOB#
DEALER P.O.#
DRAWN BY:
DATE:
DRAWING IDENTIFICATION NUMBER
XXXXXX