

- TECHNICAL DATA:**
1. MAXIMUM RAIL MOUNTING REACTION FORCE: STATIC = 1,030 LBS. IMPACT = 2,060 LBS.
  2. RAIL FASTENING TO 2"x12" PLANK #14 x 1 3/4" TYPE A S.M.S. RAIL IS PRE-DRILLED AT FACTORY.
  3. BOLT FASTENING OF CAR TO TROLLEY 1/2" - 13 x 4" SOCKET HD CAP SCREWS

SILL DETAIL

DOOR FRAME DETAIL

DETAIL "B"

EQUIPMENT INSTALLED BY:

TYPICAL

SPECIFICATIONS

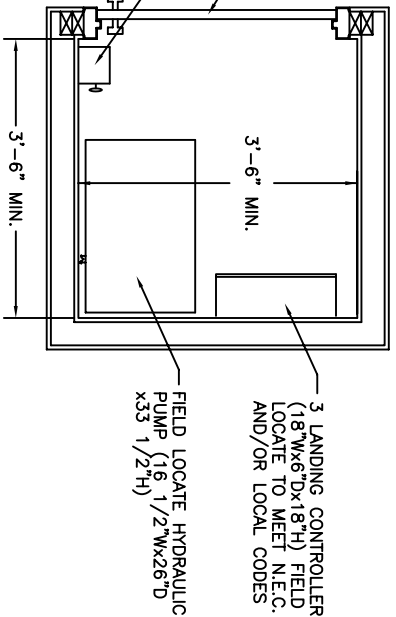
3 LANDING  
HYDRA RIDE—HIH  
"ELEVETTE" 3400  
CAR 38"Dx50"Wx7'-0"H OVERALL DIMS.  
CODE(S) 5  
CAPACITY 750 LBS. AT 36 F.P.M. ±4  
2 WIRE ROPES 13,200 LBS. T.S. IMP FLOW  
STEEL 3/8" x 8 x 19 WSC  
CAR CONSTRUCTION: 3/4" HRDWD VENEER  
COLOR/PANEL SELECTION: ADVISE

- ALL DOORS INTERLOCKED - EM4
- TOP OUTLET JACK
- JACK SPLICE
- PHONE CORD
- PHONE BOX - □ BRASS □ STAINLESS
- FLOATING GATE
- COLLAPSIBLE GATE FIN. - ADVISE
- GATE SAFETY BAR
- D.A. GATE LOCK
- ACCORDIAN FOLD GATE
- CAR CONTROL PLATE FIN. - ADVISE
- REMOTE PLATES FINISH - ADVISE
- C.O.P. HEIGHT - □ STD. □ WHEELCHAIR
- LED BUTTONS
- IN USE LIGHT
- ARRIVAL LIGHTS
- KEYSWITCH IN CAR
- STANDARD ALARM
- EMERGENCY LIGHT AND BELL
- CONSTANT PRESSURE
- DOOR OPEN ALARM
- HONING DEVICE
- LAMP FIXTURE - ADVISE
- AUTO CAB LIGHT
- HANDRAIL - ADVISE
- FLOOR - ADVISE
- STABILIZER
- HALF TROLLEY
- SOLID STOP
- BUFFER SPRING D6" □12"

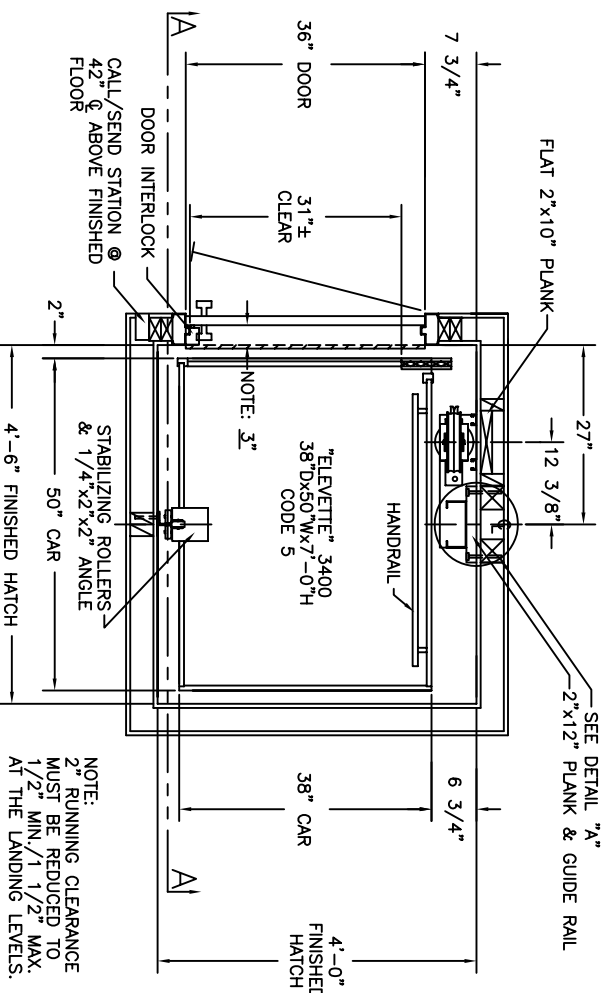
- NOTES:
1. NOTICE TO ELECTRICAL CONTRACTOR: BRING 4 #10 WIRES TO DISCONNECT SWITCH + GROUND: (2)120V. (2)40PWR, (1)120V. (LIGHT) (1)NEUTRAL 2 1/2 H.P. MOTOR 240 VOLTS 1 PHASE 60 CYCLE
  2. NOTICE TO G.C. ALL HOISTWAY AND MACHINE ROOM CONSTRUCTION MUST COMPLY WITH NATIONAL, STATE, AND LOCAL CODES. PLEASE ADVISE INCOA OF ANY CHANGES NEEDED TO THE DRAWING FOR COMPLIANCE IN YOUR AREA.
  3. SWING TYPE SHAFT DOORS BY OTHERS. HIS REPRESENTATIVE: ALL ELECTRICAL WIRING MUST BE DONE BY A JOURNEYMEN MECHANIC AND MUST MEET NATIONAL, STATE, AND LOCAL CODES.

INCOA JOB #  
DEALER P.O. #  
DRAWING BY:  
DATE:  
DRAWING IDENTIFICATION NUMBER

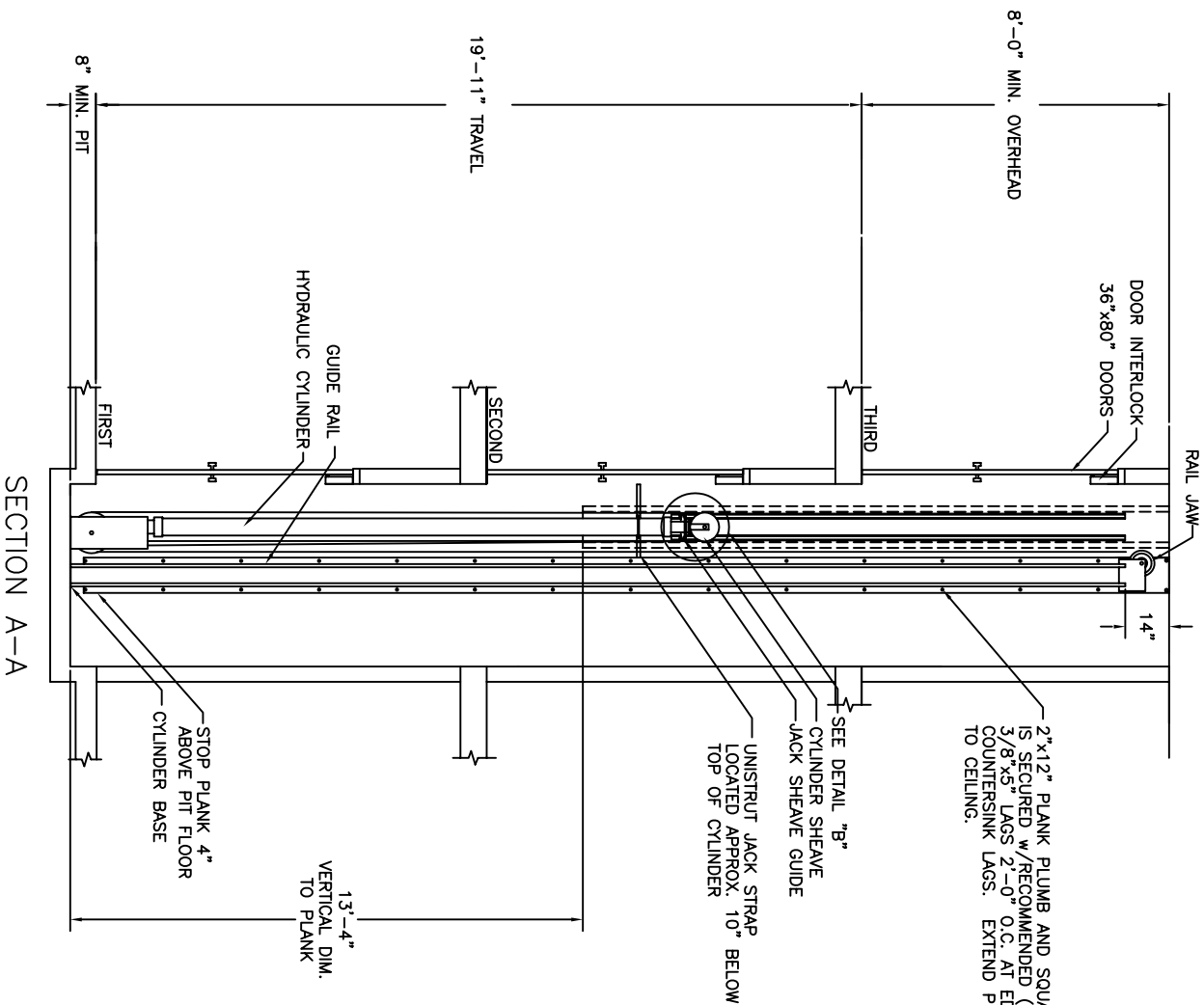
NOTE: MACHINE ROOM LAYOUT MUST COMPLY WITH LOCAL, STATE AND NATIONAL CODES. REVISE AS NECESSARY FOR COMPLIANCE IN YOUR AREA.



(LOCATED BEHIND RAIL, OVERHEAD, ADJACENT, OR REMOTE : CONSULT FACTORY)



SHAFT PLAN



SECTION A-A



HARRISBURG, PA  
SHOP DRAWING NAME  
TYPICAL  
ARCHITECT

GENERAL CONTRACTOR

TYPICAL

EQUIPMENT INSTALLED BY:

SPECIFICATIONS

3 LANDING  
HYDRA RIDE—HIH  
"ELEVETTE" 3400  
CAR 38"Dx50"Wx7'-0"H OVERALL DIMS.  
CODE(S) 5  
CAPACITY 750 LBS. AT 36 F.P.M. ±4  
2 WIRE ROPES 13,200 LBS. T.S. IMP FLOW  
STEEL 3/8" x 8 x 19 WSC  
CAR CONSTRUCTION: 3/4" HRDWD VENEER  
COLOR/PANEL SELECTION: ADVISE

- ALL DOORS INTERLOCKED - EM4
- TOP OUTLET JACK
- JACK SPLICE
- PHONE CORD
- PHONE BOX - □ BRASS □ STAINLESS
- FLOATING GATE
- COLLAPSIBLE GATE FIN. - ADVISE
- GATE SAFETY BAR
- D.A. GATE LOCK
- ACCORDIAN FOLD GATE
- CAR CONTROL PLATE FIN. - ADVISE
- REMOTE PLATES FINISH - ADVISE
- C.O.P. HEIGHT - □ STD. □ WHEELCHAIR
- LED BUTTONS
- IN USE LIGHT
- ARRIVAL LIGHTS
- KEYSWITCH IN CAR
- STANDARD ALARM
- EMERGENCY LIGHT AND BELL
- CONSTANT PRESSURE
- DOOR OPEN ALARM
- HONING DEVICE
- LAMP FIXTURE - ADVISE
- AUTO CAB LIGHT
- HANDRAIL - ADVISE
- FLOOR - ADVISE
- STABILIZER
- HALF TROLLEY
- SOLID STOP
- BUFFER SPRING D6" □12"

- NOTES:
1. NOTICE TO ELECTRICAL CONTRACTOR: BRING 4 #10 WIRES TO DISCONNECT SWITCH + GROUND: (2)120V. (2)40PWR, (1)120V. (LIGHT) (1)NEUTRAL 2 1/2 H.P. MOTOR 240 VOLTS 1 PHASE 60 CYCLE
  2. NOTICE TO G.C. ALL HOISTWAY AND MACHINE ROOM CONSTRUCTION MUST COMPLY WITH NATIONAL, STATE, AND LOCAL CODES. PLEASE ADVISE INCOA OF ANY CHANGES NEEDED TO THE DRAWING FOR COMPLIANCE IN YOUR AREA.
  3. SWING TYPE SHAFT DOORS BY OTHERS. HIS REPRESENTATIVE: ALL ELECTRICAL WIRING MUST BE DONE BY A JOURNEYMEN MECHANIC AND MUST MEET NATIONAL, STATE, AND LOCAL CODES.

INCOA JOB #  
DEALER P.O. #  
DRAWING BY:  
DATE:  
DRAWING IDENTIFICATION NUMBER

