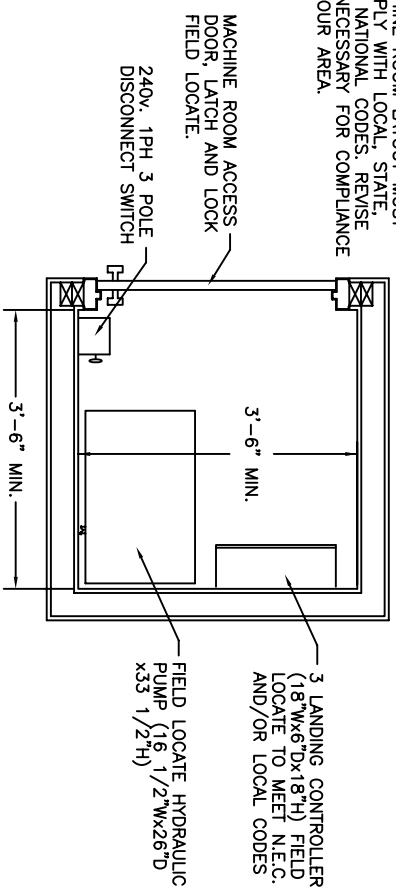


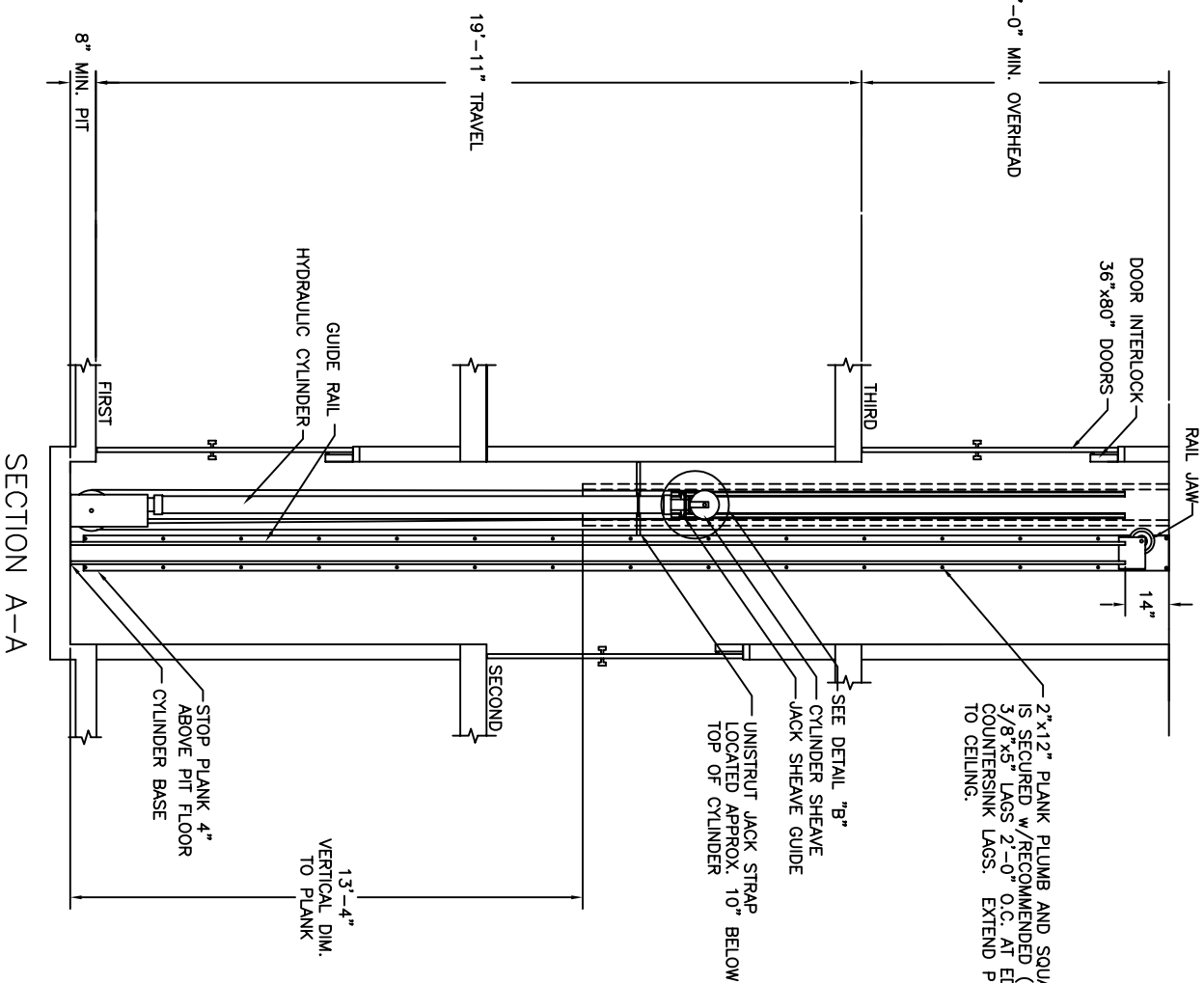
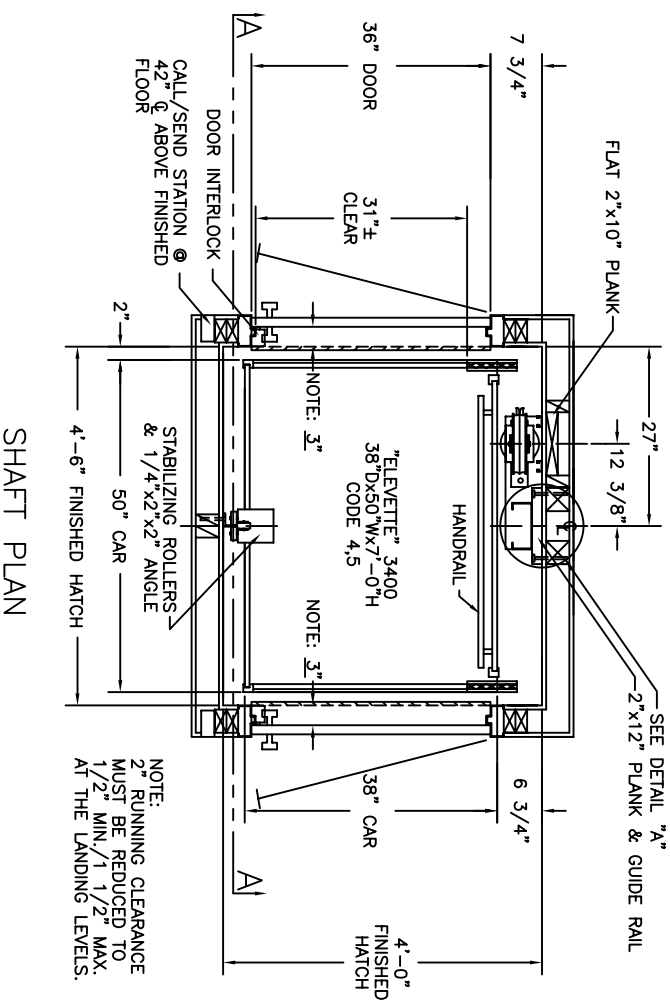
- TECHNICAL DATA:
1. MAXIMUM RAIL MOUNTING REACTION FORCE: STATIC = 1,030 LBS. IMPACT = 2,060 LBS.
 2. RAIL FASTENING TO 2"x12" PLANK #14 x 1 3/4" TYPE A S.M.S. RAIL IS PRE-DRILLED AT FACTORY.
 3. BOLT FASTENING OF CAR TO TROLLEY 1/2" - 13 x 4" SOCKET HD CAP SCREWS

SILL DETAIL

NOTE: MACHINE ROOM LAYOUT MUST COMPLY WITH LOCAL, STATE AND NATIONAL CODES. REVISE AS NECESSARY FOR COMPLIANCE IN YOUR AREA.



MACHINE ROOM PLAN (LOCATED BEHIND RAIL, OVERHEAD, ADJACENT, OR REMOTE : CONSULT FACTORY)



INCLINATOR
COMPANY OF AMERICA
HARRISBURG, PA

SHOP DRAWING NAME
TYPICAL
ARCHITECT

GENERAL CONTRACTOR

EQUIPMENT INSTALLED BY:
TYPICAL

SPECIFICATIONS
3 LANDING
HYDRA RIDE—HIH
"ELEVETTE" 3400

CAR 38"Dx50"Wx7'-0"H OVERALL DIMS.
CODE(S) 4,5
CAPACITY 750 LBS. AT 36 F.P.M. ±4
2 WIRE ROPES 13,200 LBS. T.S. IMP FLOW
STEEL 3/8" x 8 x 19 WSC
CAR CONSTRUCTION: 3/4" HRDWD VENEER
COLOR/PANEL SELECTION: ADVISE

- ALL DOORS INTERLOCKED - EM4
 - TOP OUTLET JACK
 - JACK SPLICE
 - PHONE CORD
 - PHONE BOX - □ BRASS □ STAINLESS
 - FLOATING GATE
 - COLLAPSIBLE GATE FIN. - ADVISE
 - GATE SAFETY BAR
 - D.A. GATE LOCK
 - ACCORDIAN FOLD GATE
 - CAR CONTROL PLATE FIN. - ADVISE
 - REMOTE PLATES FINISH - ADVISE
 - C.O.P. HEIGHT - □ STD. □ WHEELCHAIR
 - LED BUTTONS
 - IN USE LIGHT
 - ARRIVAL LIGHTS
 - KEYSWITCH IN CAR
 - STANDARD ALARM
 - EMERGENCY LIGHT AND BELL
 - CONSTANT PRESSURE
 - DOOR OPEN ALARM
 - HONING DEVICE
 - LAMP FIXTURE - ADVISE
 - AUTO CAB LIGHT
 - HANDRAIL - ADVISE
 - FLOOR - ADVISE
 - STABILIZER
 - HALF TROLLEY
 - SOLID STOP
 - BUFFER SPRING D6" □12"
- NOTES:
1. NOTICE TO ELECTRICAL CONTRACTOR: BRING 4 #10 WIRES TO DISCONNECT SWITCH + GROUND: (2)120V. (2)40PWR, (1)120V. (LIGHT) (1)NEUTRAL (2)1/2 H.P. MOTOR 240 VOLTS 1 PHASE 60 CYCLE
 2. NOTICE TO G.C. 30 AMP MAIN LINE FUSE
 3. NOTICE TO G.C. ALL HOISTWAY AND MACHINE ROOM CONSTRUCTION MUST COMPLY WITH NATIONAL, STATE, AND LOCAL CODES. PLEASE ADVISE INCOA OF ANY CHANGES NEEDED TO THE DRAWING FOR COMPLIANCE IN YOUR AREA.
 4. SWING TYPE SHAFT DOORS BY OTHERS. HIS REPRESENTATIVE: ALL ELECTRICAL WIRING MUST BE DONE BY A JOURNEYPERMAN MECHANIC AND MUST MEET NATIONAL, STATE, AND LOCAL CODES.