

- TECHNICAL DATA:**
1. MAXIMUM RAIL MOUNTING REACTION FORCE: STATIC = 1,030 LBS. IMPACT = 2,060 LBS.
 2. RAIL FASTENING TO 2"x12" PLANK #14 x 1 3/4" TYPE A S.M.S. RAIL IS PRE-DRILLED AT FACTORY.
 3. BOLT FASTENING OF CAR TO TROLLEY 1/2" - 13 x 4" SOCKET HD CAP SCREWS

SILL DETAIL

DOOR FRAME DETAIL

DETAIL "B"

EQUIPMENT INSTALLED BY:

TYPICAL

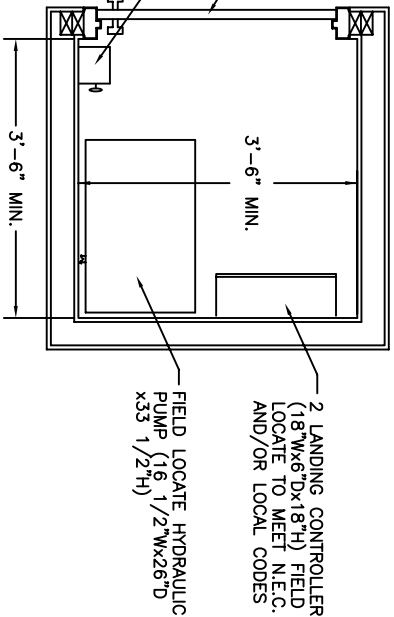
SPECIFICATIONS

- 2 LANDING
- HYDRA RIDE - HIH
- "ELEVETTE" 3400
- CAR 36"Dx48"Wx7'-0"H OVERALL DIMS.
- CODE(S) 1
- CAPACITY 750 LBS. AT 36 F.P.M. ±4
- 2 WIRE ROPES 13,200 LBS. T.S. IMP FLOW
- STEEL 3/8" x 8 x 19 WSC
- CAR CONSTRUCTION: 3/4" HRDWD VENEER
- COLOR/PANEL SELECTION: ADVISE
- ALL DOORS INTERLOCKED - EM4
- TOP OUTLET JACK
- JACK SPLICE
- PHONE CORD
- PHONE BOX - BRASS STAINLESS
- FLOATING GATE
- COLLAPSIBLE GATE FIN. - ADVISE
- GATE SAFETY BAR
- D.A. GATE LOCK
- ACCORDIAN FOLD GATE
- CAR CONTROL PLATE FIN. - ADVISE
- REMOTE PLATES FINISH - ADVISE
- C.O.P. HEIGHT - STD. WHEELCHAIR
- LED BUTTONS
- IN USE LIGHT
- ARRIVAL LIGHTS
- KEYSWITCH IN CAR
- STANDARD ALARM
- EMERGENCY LIGHT AND BELL
- CONSTANT PRESSURE
- DOOR OPEN ALARM
- HOMING DEVICE
- LAMP FIXTURE - ADVISE
- AUTO CAB LIGHT
- HANDRAIL - ADVISE
- FLOOR - ADVISE
- STABILIZER
- HALF TROLLEY
- SOLID STOP
- BUFFER SPRING DB" Ø12"

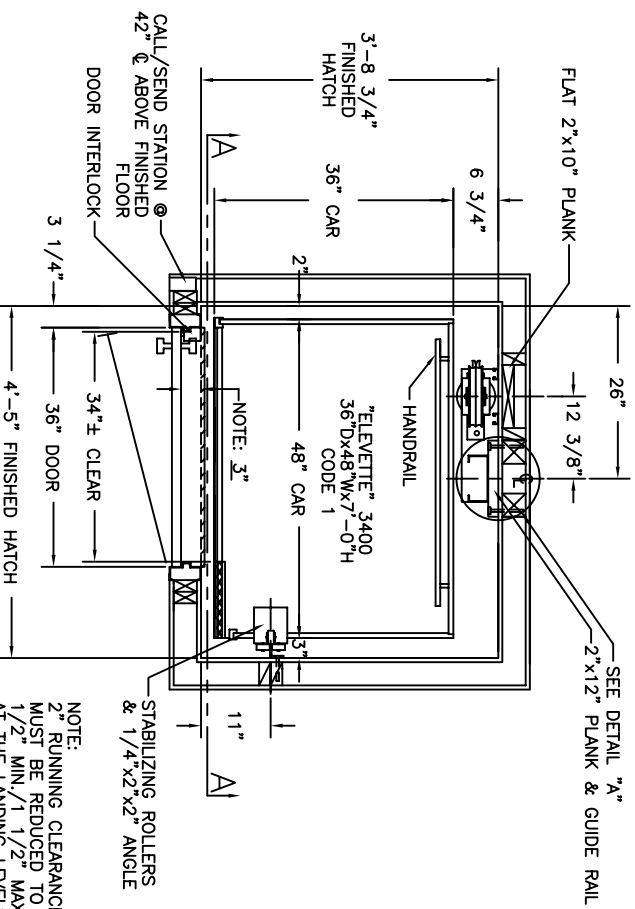
NOTE: MACHINE ROOM LAYOUT MUST COMPLY WITH LOCAL, STATE AND NATIONAL CODES. REVISE AS NECESSARY FOR COMPLIANCE IN YOUR AREA.

MACHINE ROOM ACCESS DOOR, LATCH AND LOCK FIELD LOCATE.

240V, 1PH 3 POLE DISCONNECT SWITCH

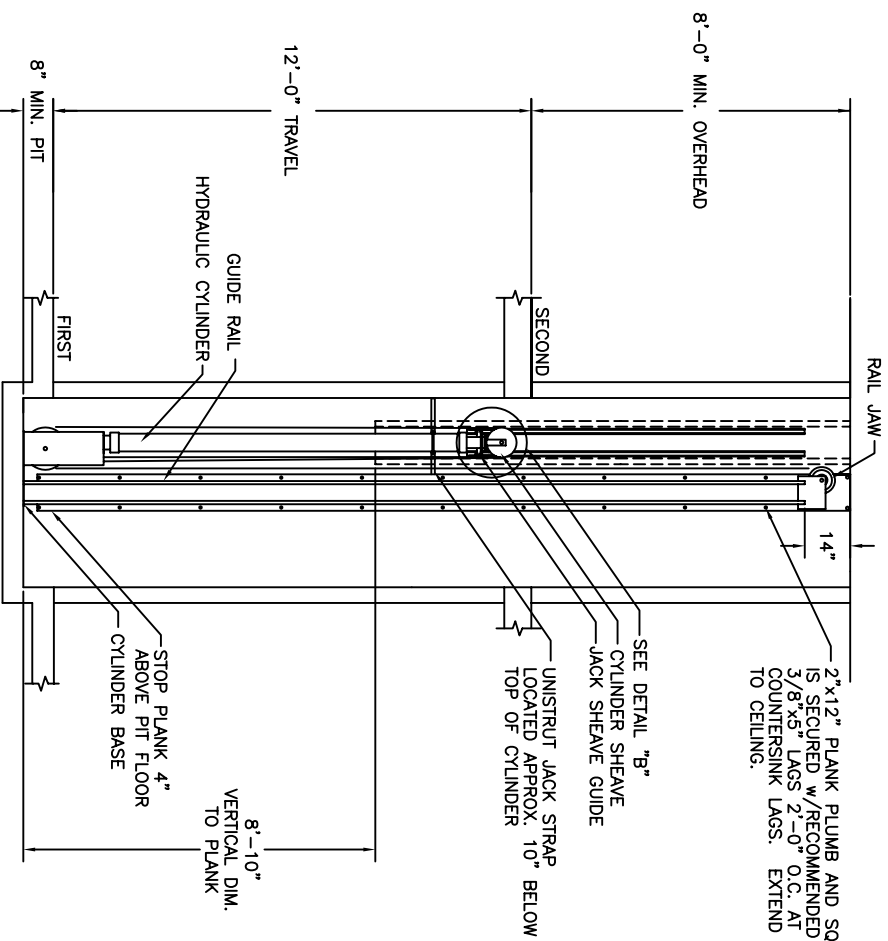


MACHINE ROOM PLAN (LOCATED BEHIND RAIL, OVERHEAD, ADJACENT, OR REMOTE : CONSULT FACTORY)



SHAFT PLAN

SECTION A-A



NOTE: 2" RUNNING CLEARANCE MUST BE REDUCED TO 1/2" MIN./1 1/2" MAX. AT THE LANDING LEVELS.

INCOA JOB #
DEALER P.O. #
DRAWING BY:
DATE:
DRAWING IDENTIFICATION NUMBER

