

SHOP DRAWING NAME

TYPICAL

ARCHITECT

GENERAL CONTRACTOR

EQUIPMENT INSTALLED BY

TYPICAL

**SPECIFICATIONS**

2 LANDING

"ELEVETTE" 3400

CAR 36"Dx48"Wx7'-0"H OVERALL DIMS.

CAPACITY 1

2 WIRE ROPES 13,200 LBS. T.S. IMP PLOW

STEEL 3/8" x 8 x 19 WSC

CAR CONSTRUCTION 3/4" HRDWD VENEER

COLOR/PANEL SELECTION ADVISE

ALL DOORS INTERLOCKED - EM4

SOUND BASE

MACHINE LIMIT

PHONE CORD - BRASS DISTAINLESS

FLOATING GATE

COLLAPSIBLE GATE FIN - ADVISE

GATE SAFETY BAR

D.A. GATE LOCK

ACCORDIAN FOLD GATE

CAR CONTROL PLATE FIN - ADVISE

REMOTE PLATES FINISH - ADVISE

C.D.P. HEIGHT - DSTD. DWHEELCHAIR

LED BUTTONS

IN USE LIGHT

ARRIVAL LIGHTS

KEYSWITCH OPERATION

STANDARD ALARM

EMERGENCY LIGHT AND BELL

CONSTANT PRESSURE

DOOR OPEN ALARM

HOMING DEVICE

LAMP FIXTURE - ADVISE

AUTO CAB LIGHT

HANDRAIL - ADVISE

FLOOR TYPE - ADVISE

STABILIZER

HALF TROLLEY

SOFT START

EBL

NOTICE:

1. NOTICE TO ELECTRICAL CONTRACTOR:

BRING 4 #10 WIRES TO DISCONNECT

SWITCH + GROUND. (2)120V. (2)400V/R, (1)120V. (1)LIGHT. (1)NEUTRAL.

3 HP. MOTOR 240 VOLTS 3 PHASE

60 CYCLE (RUNS ON 1 PHASE)

16 AMPS RUN 60 AMPS START

30 AMP MAIN LINE FUSE

2. NOTICE TO G.C.

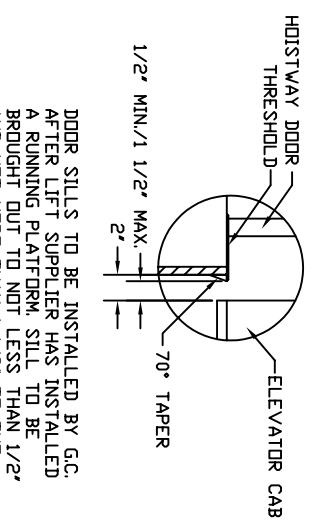
ALL HOISTWAY AND MACHINE ROOM

CONSTRUCTION MUST COMPLY WITH

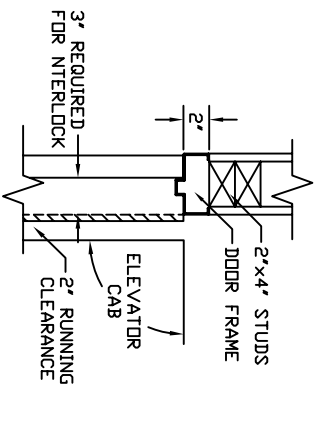
NATIONAL, STATE, AND LOCAL CODES.

PLEASE ADVISE INCO OF ANY CHANGES

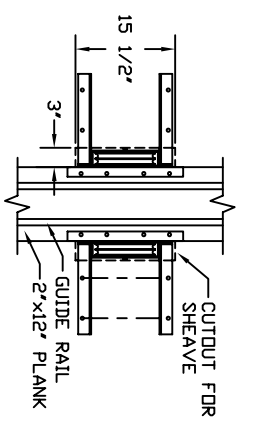
- TECHNICAL DATA:**
1. REACTIONS ON ALL SHEAVES AND MOUNTINGS STATIC = 1,350 LBS. IMPACT = 2,700 LBS.
  2. FASTENING OF HOISTING MACHINE TO CONCRETE 1/2" x 3" HILTI BOLTS (OR EQUAL)
  3. RAIL FASTENING TO 2"x12" PLANK #14 x 1 3/4" TYPE A S.M.S. RAIL IS PRE-DRILLED AT FACTORY.
  4. BOLT FASTENING OF CAR TO TROLLEY 1/2" - 13 x 4" SOCKET HD CAP SCREWS



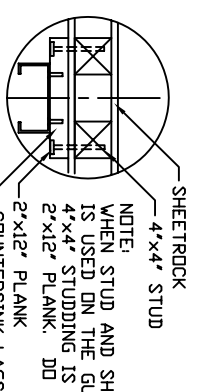
SILL DETAIL



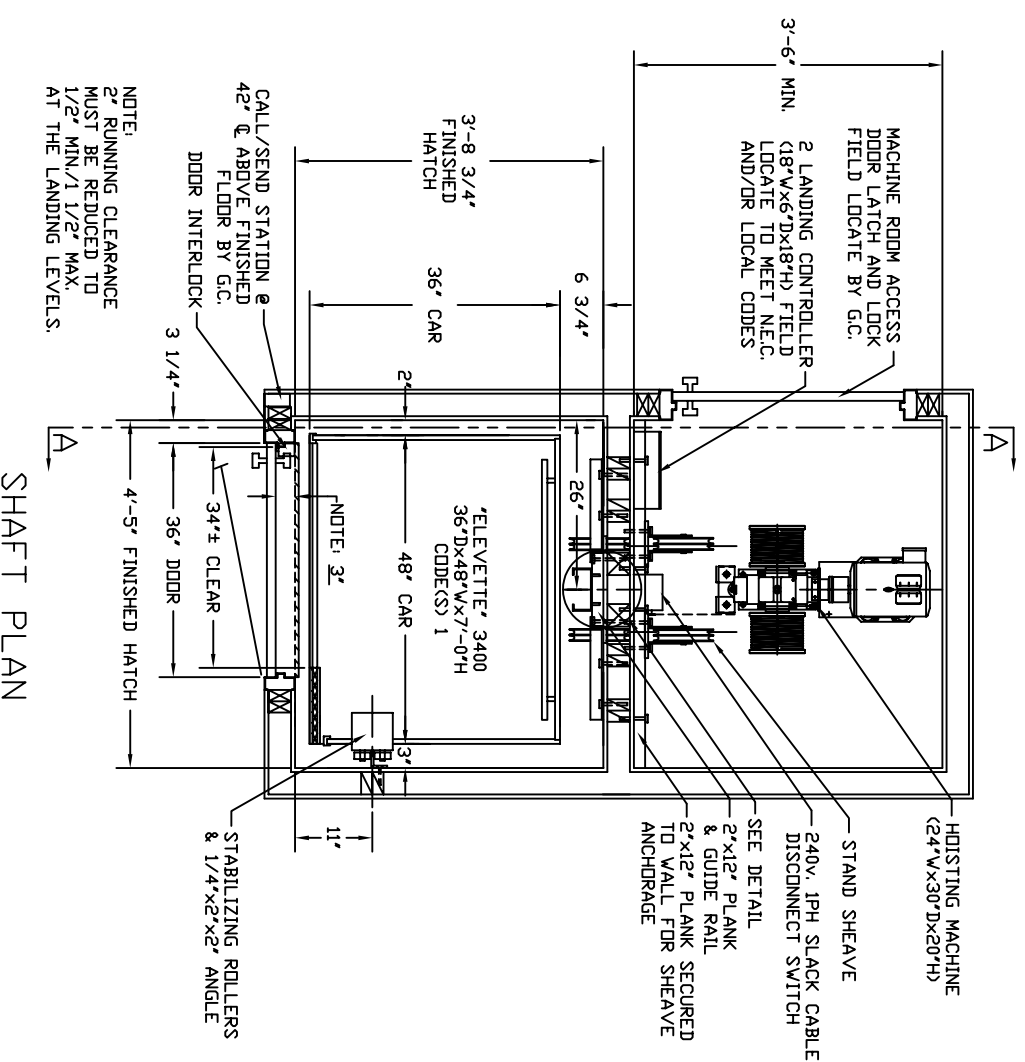
DOOR FRAME DETAIL



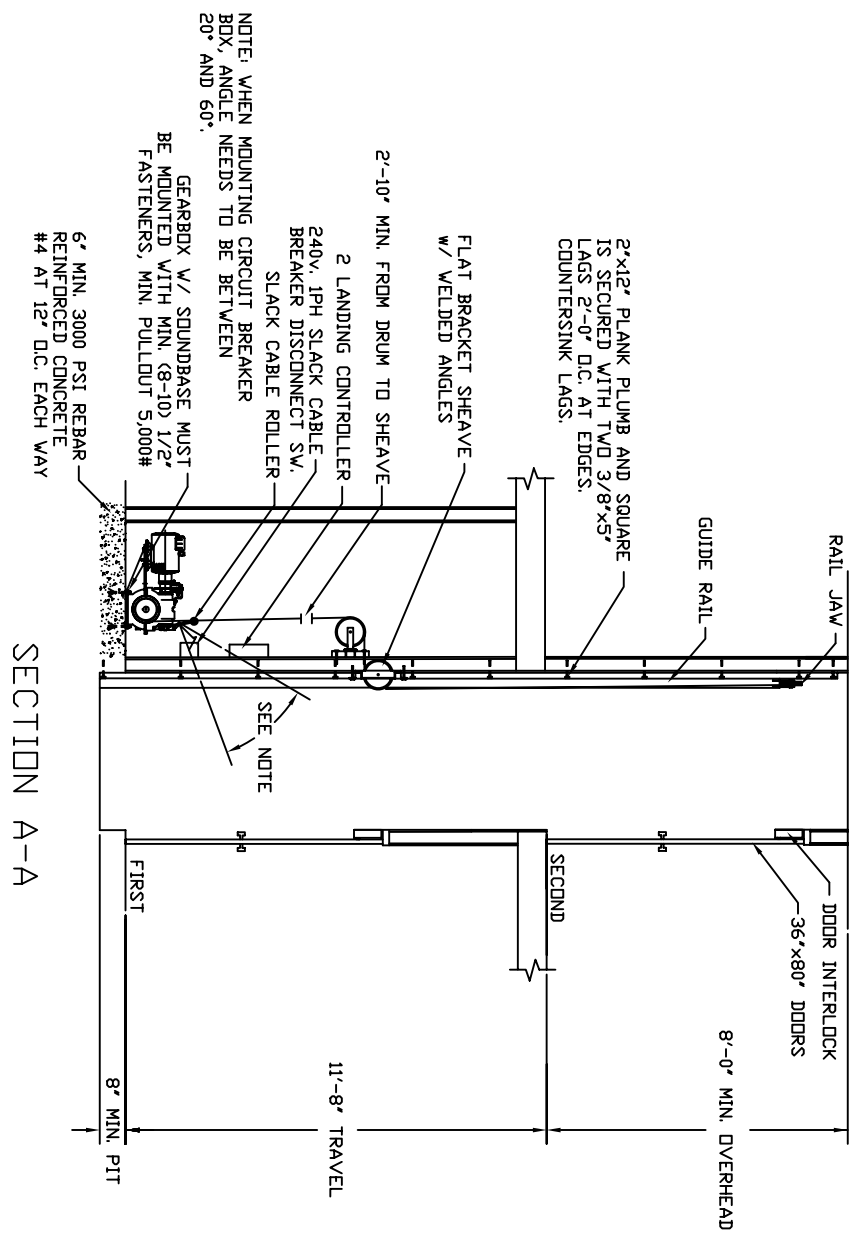
CUTOUT DETAIL



DETAIL



SHAFT PLAN



SECTION A-A