

SHOP DRAWING NAME

TYPICAL

ARCHITECT

GENERAL CONTRACTOR

EQUIPMENT INSTALLED BY

TYPICAL

SPECIFICATIONS

2 LANDING  
500# DUMBWAITER

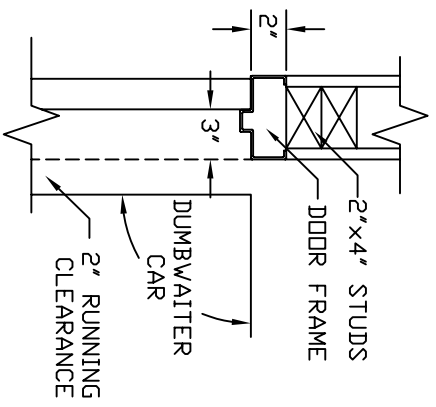
CAR 36"Dx36"Wx48"H CODE(S) 5  
CAPACITY 500 LBS. AT 30 F.P.M.  
1 CABLE 5,700 LBS. T.S. IMP. FLOW  
STEEL 1/4" x 8 x 19 WSC  
CAR CONSTRUCTION: AUTO STEEL  
COLOR/PANEL SELECTION: BEIGE

- LIGHT IN CAR
- ADJUSTABLE SHELF
- COLLAPSIBLE GATE
- LIP ON CAR
- IN USE LIGHTS
- ARRIVAL LIGHTS
- KEYSWITCH OPERATION
- DOOR OPEN ALARM
- ARRIVAL GONG
- STEEL FLOOR
- STABILIZER
- FORMICA FLOOR

NOTICE TO ELECTRICAL CONTRACTOR:  
BRING 4 #10 WIRES TO DISCONNECT SWITCH, (2)-110, (1)-NEUTRAL, (1)-GROUND, 1 1/2 HP. MOTOR 220 VOLTS 1 PHASE 60 CYCLE  
11.5 AMPS RUN 56 AMPS START  
FUSE 15 AMP SLD BLD  
30 AMP MAIN LINE FUSE  
SWING TYPE SHAFT DOORS BY OTHERS

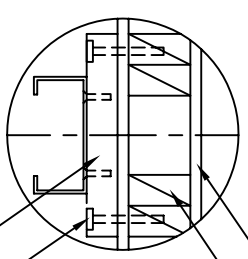
INCDA JOB #  
DEALER P.O. #  
DRAWN BY:  
DATE:

DRAWING IDENTIFICATION NUMBER



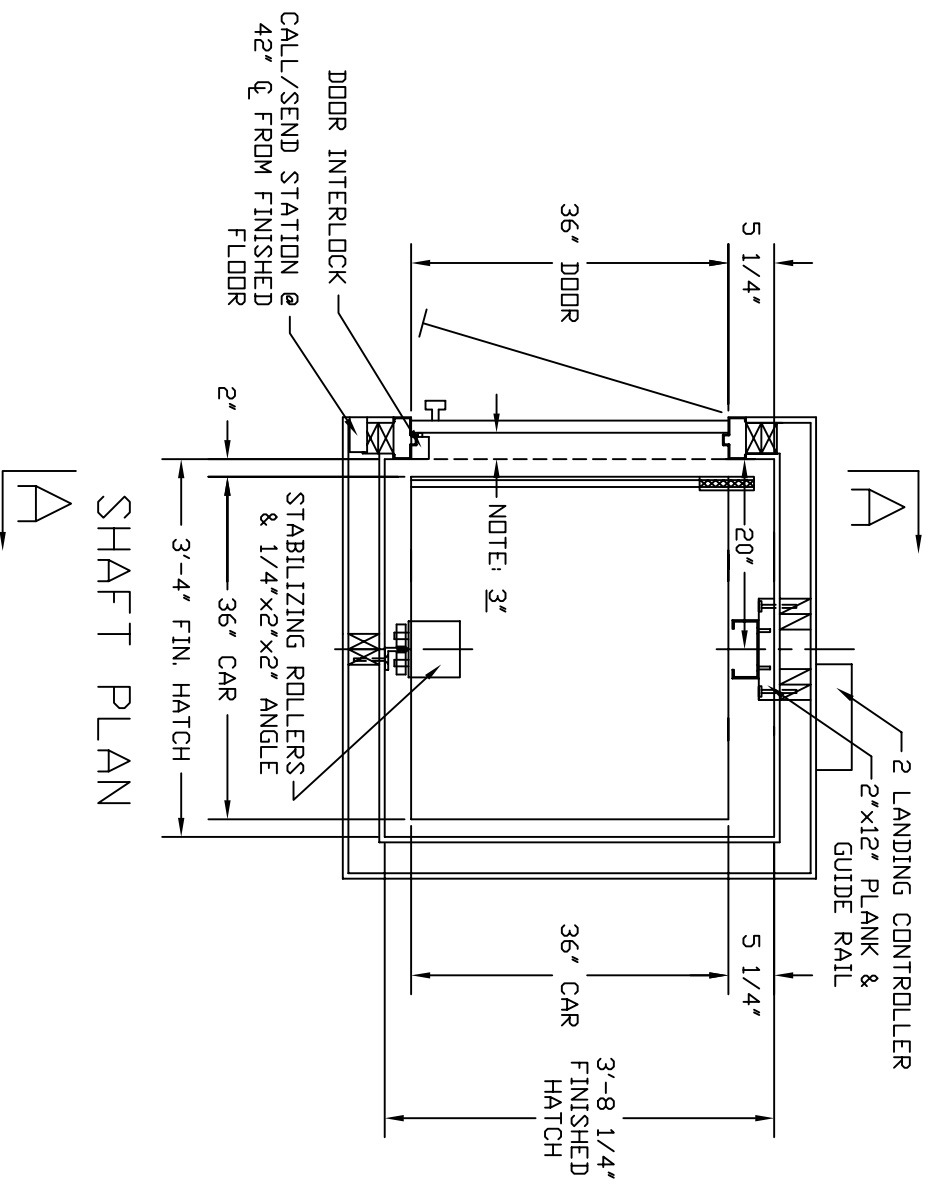
DOOR FRAME DETAIL

- TECHNICAL DATA:
1. REACTIONS ON ALL SHEAVES AND MOUNTINGS  
STATIC = 1,100 LBS.  
IMPACT = 2,200 LBS.
  2. FASTENING OF HOISTING MACHINE TO CONCRETE  
1/2" x 3" HILTI BOLTS (OR EQUAL)
  3. RAIL FASTENING TO 2"x12" PLANK  
#14 x 1 3/4" TYPE A S.M.S. RAIL IS PRE-DRILLED AT FACTORY.
  4. BOLT FASTENING OF CAR TO TROLLEY  
1/2" - 13 x 4" SOCKET HD CAP SCREWS

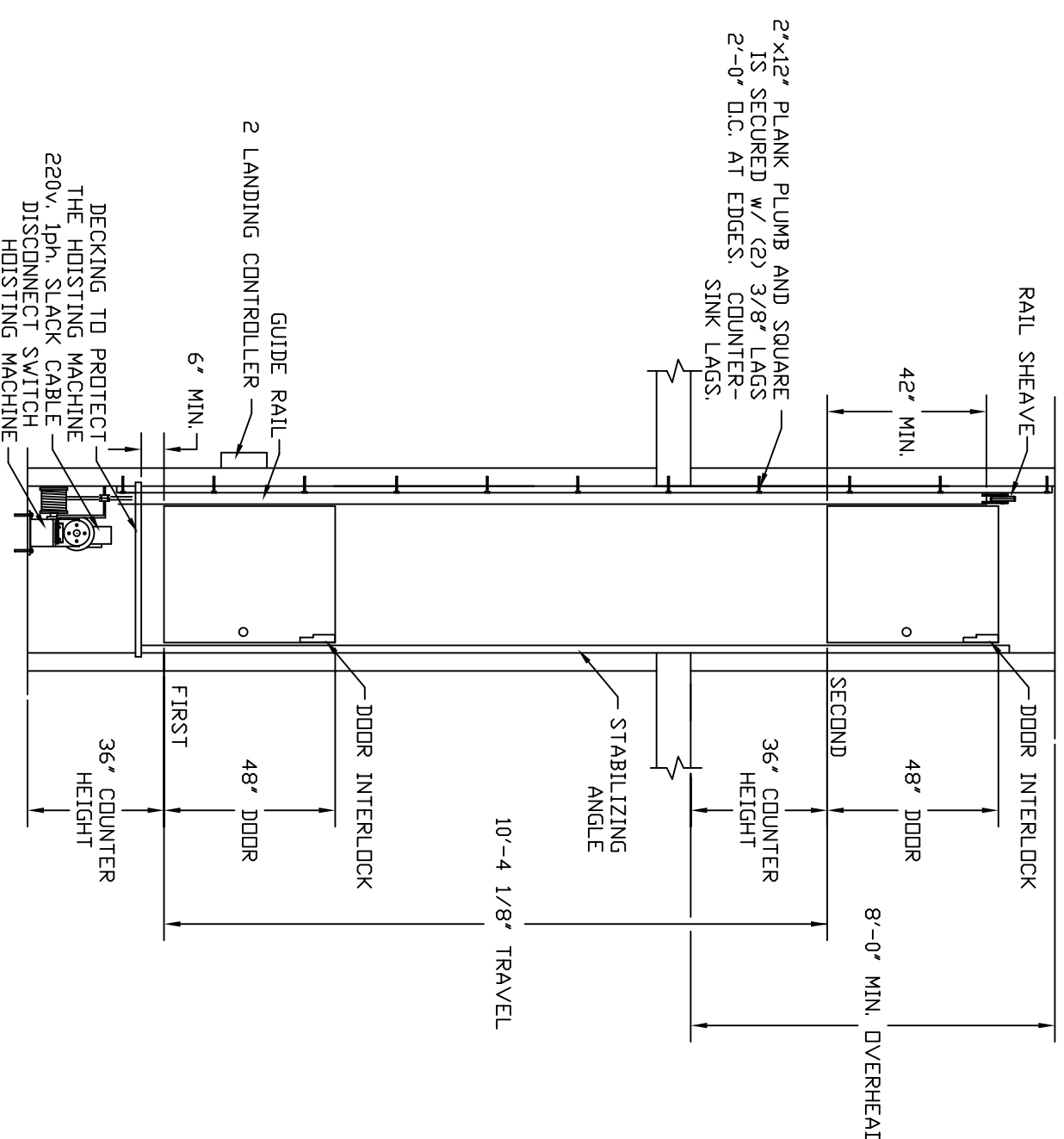


DETAIL "A"

NOTE:  
WHEN STUD AND SHEETROCK CONSTRUCTION IS USED ON THE GUIDE RAIL SUPPORT WALL DOUBLE STUDDING IS NEEDED BEHIND THE 2"x12" PLANK.  
COUNTERSINK LAGS  
2"x12" PLANK



SHAFT PLAN



SECTION A-A

DECKING TO PROTECT THE HOISTING MACHINE  
220v. 1ph. SLACK CABLE DISCONNECT SWITCH  
HOISTING MACHINE

2"x12" PLANK PLUMB AND SQUARE IS SECURED W/ (2) 3/8" LAGS 2'-0" O.C. AT EDGES. SINK LAGS.