

SHOP DRAWING NAME

TYPICAL

ARCHITECT

GENERAL CONTRACTOR

EQUIPMENT INSTALLED BY

TYPICAL

SPECIFICATIONS

2 LANDING  
500# DUMBWAITER

CAR SIZE 30"Dx36"Wx48"H CODE 6  
CAPACITY 500 LBS. AT 35 F.P.M.  
1 CABLE 5700 LBS. T.S. IMP. PLDW  
1/4" x 8 x 19 WSC  
CAR CONSTRUCTION - STAINLESS STEEL  
COLDR SELECTION - N/A

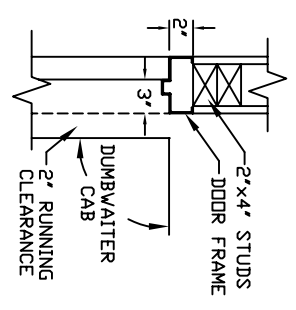
- LIGHT IN CAR
- SHELF IN CAR (ADJUSTABLE)
- COLLAPSIBLE GATE
- LIP ON CAR
- IN USE LIGHTS
- ARRIVAL LIGHTS
- KEYSWITCH OPERATION
- DOOR OPEN ALARM
- ARRIVAL GONG
- STEEL FLOOR
- STABILIZER
- FORMICA FLOOR

NOTE TO ELECTRICAL CONTRACTOR:  
BRING 4 #10 WIRES TO DISCONNECT SWITCH; (2)-110, (1)-NEUTRAL, (1)-GROUND.  
1 1/2 HP. MOTOR 220 VOLTS 1 PHASE 50 CYCLE  
11.5 AMPS. RUN, 56 AMPS START  
FUSE 15 AMP SLD BLD  
30 AMP MAIN LINE FUSE

NOTE: ALL HOISTWAY CONSTRUCTION MUST COMPLY WITH NATIONAL, STATE, AND LOCAL CODES. PLEASE ADVISE INCOA OF ANY CHANGES NEEDED TO THE DRAWING FOR COMPLIANCE IN YOUR AREA.  
SWING TYPE SHAFT DOORS BY OTHERS

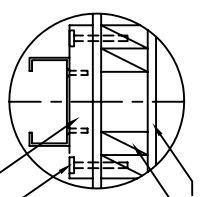
INCOA JOB #  
DEALER P.O. #  
DRAWING BY,  
DATE:

DRAWING IDENTIFICATION NUMBER

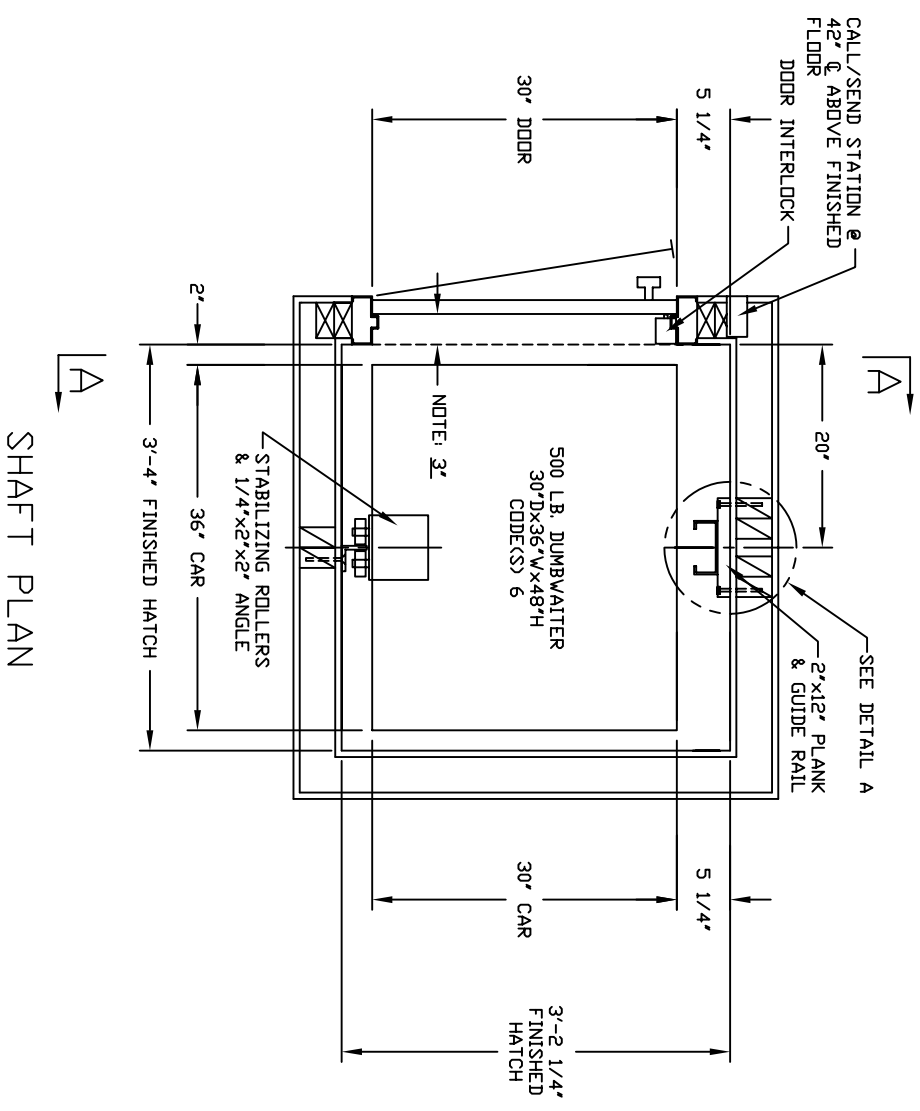


DOOR FRAME DETAIL

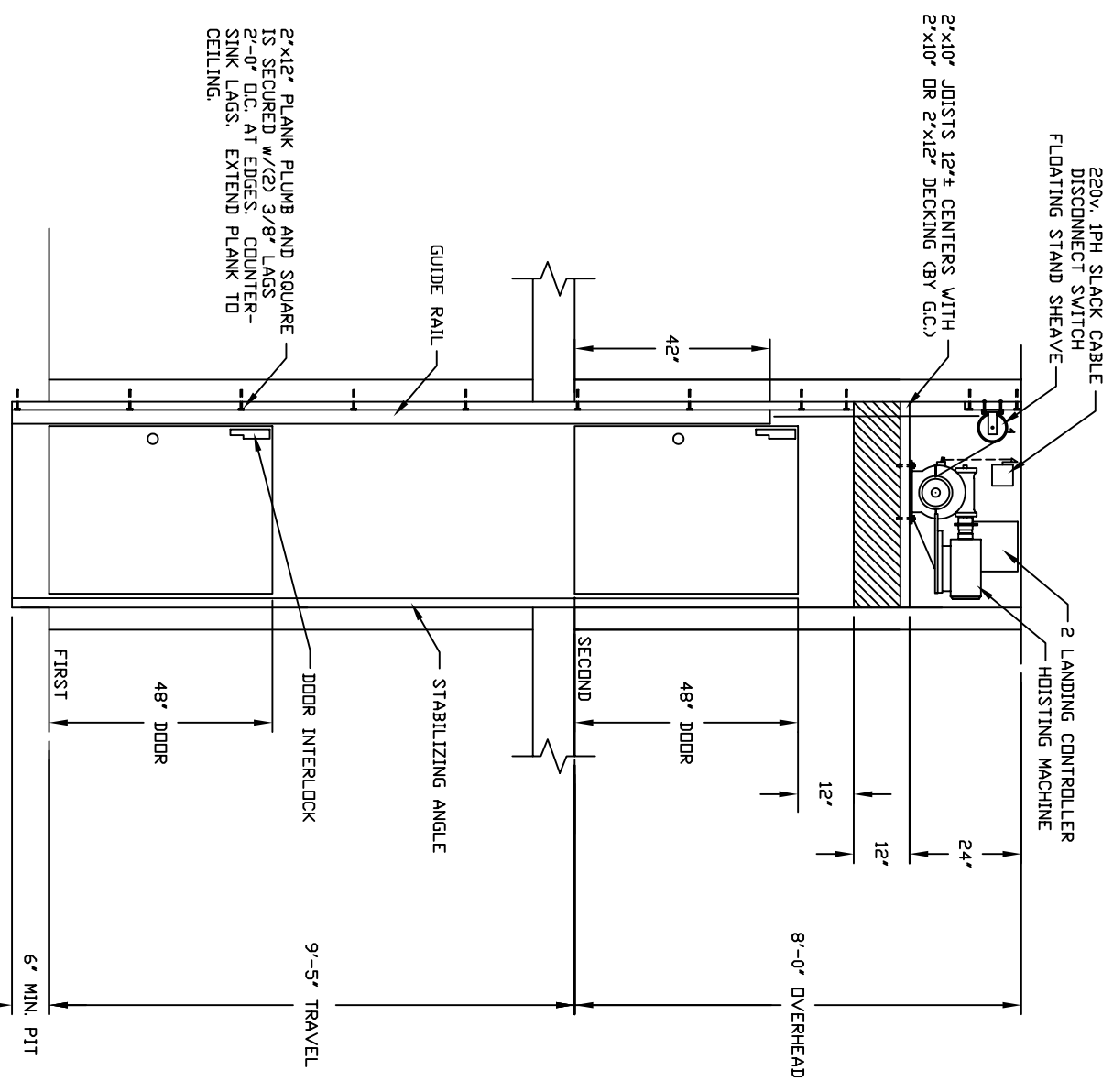
- TECHNICAL DATA:
- REACTIONS ON ALL SHEAVES AND MOUNTINGS STATIC = 1100 LBS. IMPACT = 2,200 LBS.
  - RAIL FASTENING TO 2" x 12" PLANK #14 x 1 3/4" TYPE A S.M.S. RAIL IS PRE-DRILLED AT FACTORY.
  - BOLT FASTENING OF CAR TO TROLLEY 1/2" - 13 x 4" SOCKET HD CAP SCREWS.



DETAIL "A"



SHAFT PLAN



SECTION A-A