

SHOP DRAWING NAME

TYPICAL

ARCHITECT

GENERAL CONTRACTOR

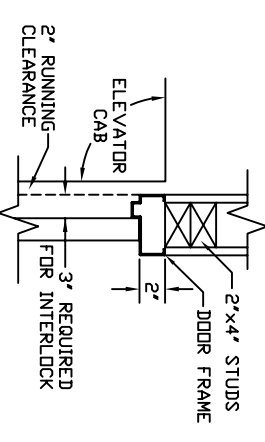
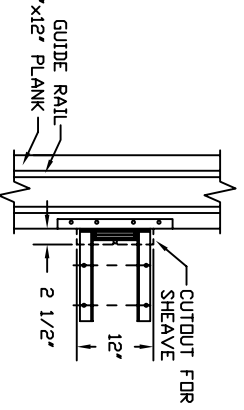
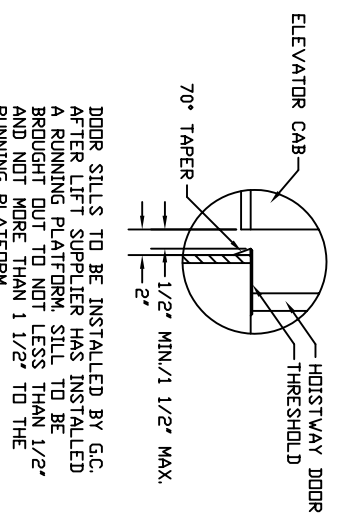
EQUIPMENT INSTALLED BY

TYPICAL

SPECIFICATIONS

2 LANDING
"ELEVETTE" 3400
CAR 36'-0" x 48'-0" x 7'-0" H OVERALL DIMS.
CAPACITY 500 LBS. AT 30 F.P.M.
2 WIRE ROPES 5,700 LBS. T.S. IMP. PLOW
STEEL 1/4" x 8 x 19 WSC
CAR CONSTRUCTION: 3/4" HRDWD VENEER
CLDR/PANEL SELECTION:
ADVISE
 ALL DDORS INTERLOCKED - EM4
 SOUND BASE
 MACHINE LIMIT
 PHONE CORD
 PHONE BOX - BRASS DRAINLESS
 COLLAPSIBLE GATE FIN. - ADVISE
 D.A. SAFETY BAR
 GATE SAFETY LOCK
 ACCORDIAN FOLD GATE
 CAR CONTROL PLATE FIN. - ADVISE
 REMOTE PLATES FINISH - ADVISE
 CDR HEIGHT - OSTD. WHEELCHAIR
 LED BUTTONS
 IN USE LIGHT
 ARRIVAL LIGHTS
 KEYSWITCH OPERATION
 STANDARD ALARM
 EMERGENCY LIGHT AND BELL
 CONSTANT PRESSURE
 DDOR OPEN ALARM
 HOMING DEVICE
 LAMP FIXTURE - ADVISE
 AUTO CAB LIGHT
 HANDRAIL
 FLOOR TYPE - ADVISE
 STABILIZER
 HALF TROLLEY
 SLID STOP
 BUFFER SPRING C6" DI2"
 SFT START
 EBL

NOTES:
1. NOTICE TO ELECTRICAL CONTRACTOR:
BRING 4 #10 WIRES TO DISCONNECT
SWITCH + GROUND) (2)120V. (240VWR),
(1)120V. (LIGHT), (1)NEUTRAL.
3 HP. MOTOR 240 VOLTS 3 PHASE
60 CYCLE RUNS DN 1 PHASE)
10 AMPS RUN 50 AMPS START
30 AMP MAIN LINE FUSE
2. NOTICE TO G.C.
ALL HOISTWAY AND MACHINE ROOM
CONSTRUCTION MUST COMPLY WITH
NATIONAL, STATE, AND LOCAL CODES.
PLEASE ADVISE INCA OF ANY CHANGES
NEEDED TO THE DRAWING FOR
COMPLIANCE IN YOUR AREA.
3. SWING TYPE SHAFT DDORS BY OTHERS.
4. NOTICE TO ELEVATOR CONTRACTOR OR
HIS REPRESENTATIVE:
ALL ELECTRICAL WIRING MUST BE DONE
BY A JOURNEYMAN MECHANIC AND MUST
MEET NATIONAL, STATE, AND LOCAL
CODES.
INCA JOB #
DEALER P.O. #
DRAWN BY:
DATE:
DRAWING IDENTIFICATION NUMBER



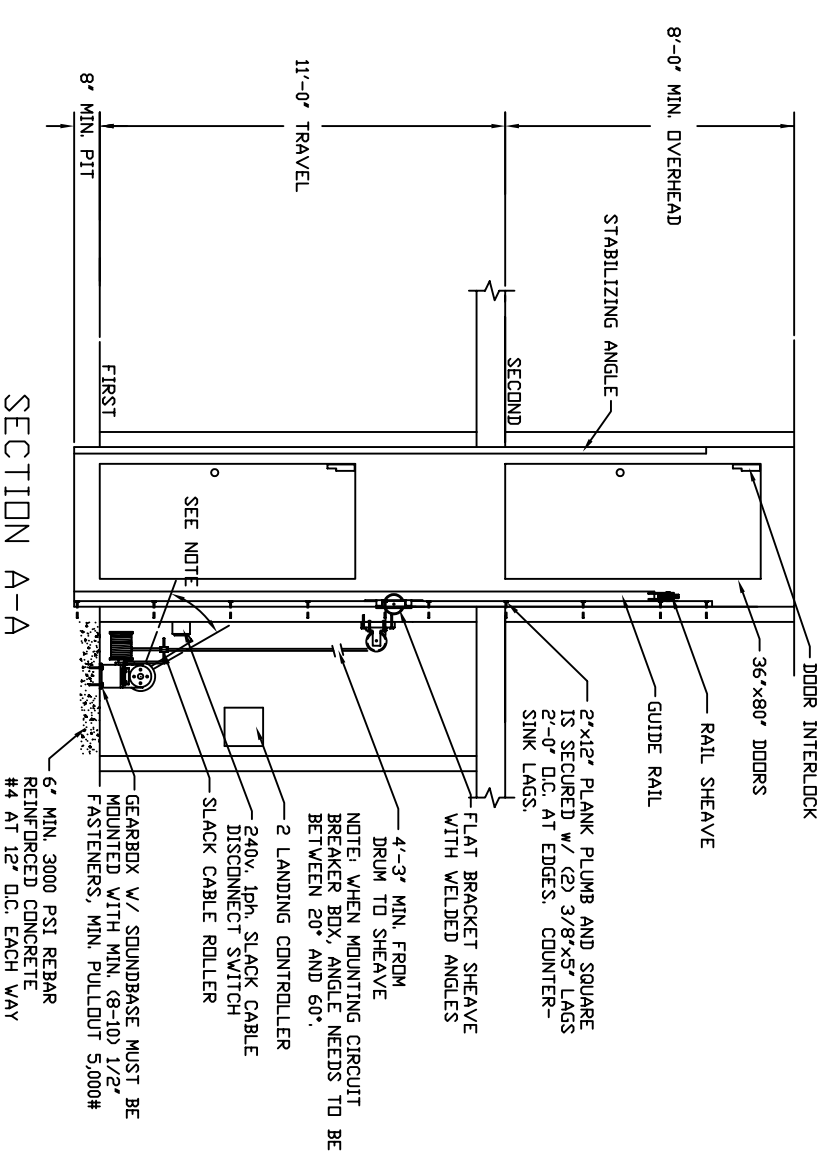
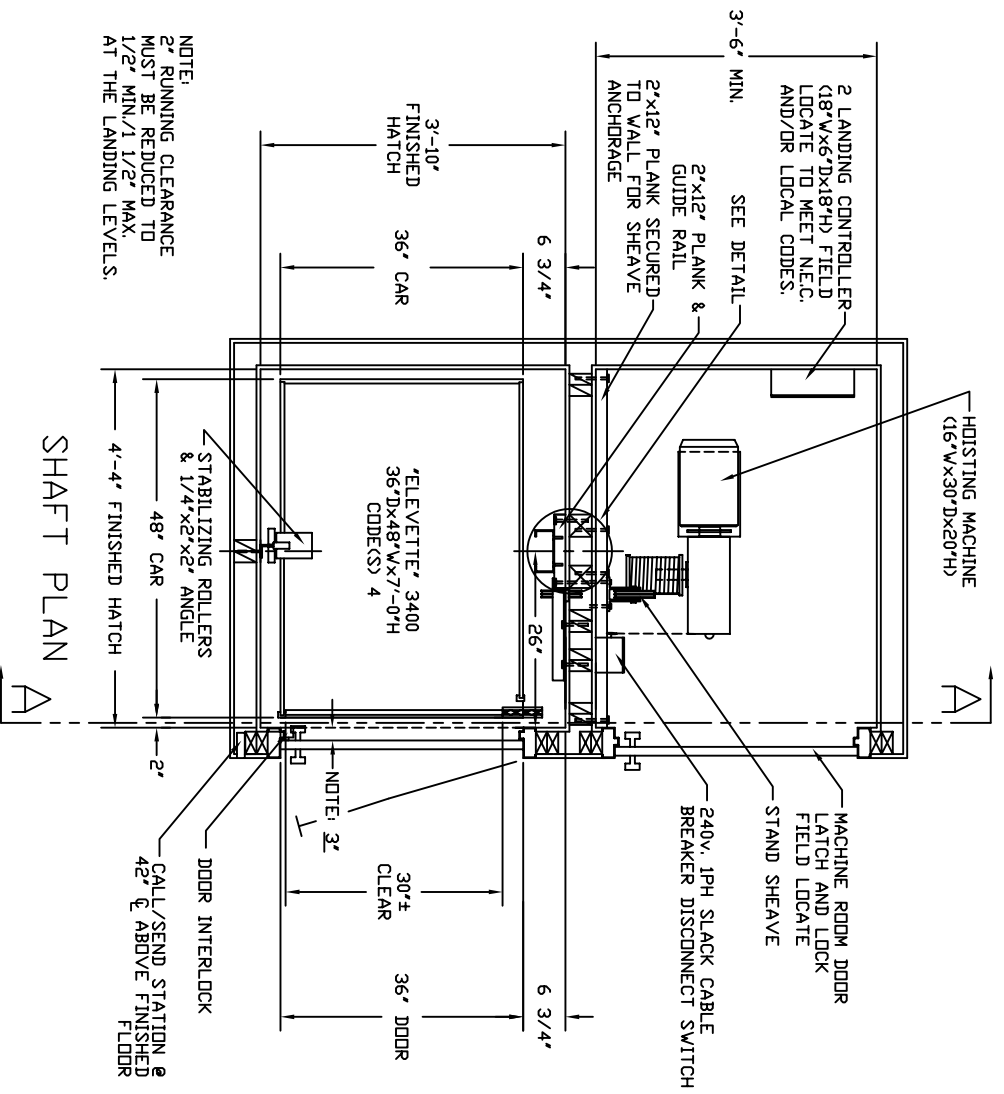
SILL DETAIL

DETAIL

CUTOUT DETAIL

DOOR FRAME DETAIL

- TECHNICAL DATA:**
1. REACTIONS ON ALL SHEAVES AND MOUNTINGS
STATIC = 1100 LBS.
IMPACT = 2,200 LBS.
 2. FASTENING OF HOISTING MACHINE TO CONCRETE
1/2" x 3" HILTI BOLTS (OR EQUAL)
 3. RAIL FASTENING TO 2"x12" PLANK
#14 x 1 3/4" TYPE A S.M.S. RAIL IS PRE-
DRILLED AT FACTORY.
 4. BOLT FASTENING OF CAR TO TROLLEY
AND NOT MORE THAN 1 1/2" TO THE
1/2" - 13 x 4" SOCKET HD CAP SCREWS



NOTE:
2. RUNNING CLEARANCE MUST BE REDUCED TO 1/2" MIN./1 1/2" MAX. AT THE LANDING LEVELS.

XXXXXX