

SHOP DRAWING NAME

TYPICAL

ARCHITECT

GENERAL CONTRACTOR

EQUIPMENT INSTALLED BY

TYPICAL

SPECIFICATIONS

300# DUMBWAITER

CAR SIZE 36"Dx36"Wx36"H OVERALL
CAR CONSTRUCTION - AUTO STEEL
COLOR SELECTION - BEIGE

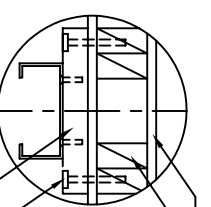
CAPACITY 300 LBS. AT 35 F.P.M.
1 CABLE 5700 LBS. T.S. IMP. PLOW
1/4" x 8 x 19 IWRC

- LIGHT IN CAR
- SHELF IN CAR (ADJUSTABLE)
- COLLAPSIBLE GATE
- LIP ON CAR
- IN USE LIGHTS
- ARRIVAL LIGHTS
- LIGHTED BUTTONS
- KEYSWITCH OPERATION
- DODOR OPEN ALARM
- ARRIVAL GONG
- STEEL FLOOR
- WHITE FORMICA FLOOR
- STABILIZER
- HOMING DEVICE
- TIME DELAY RELAY

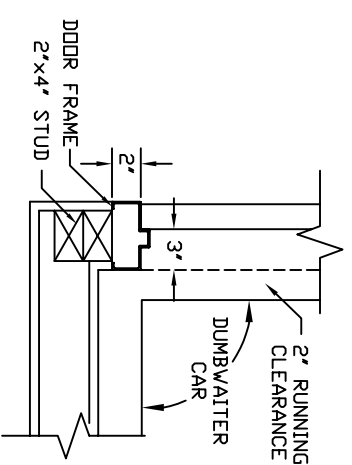
NOTICE TO ELECTRICAL CONTRACTOR:
BRING 4 #10 WIRES TO DISCONNECT
SWITCH, (2)-110, (1)-NEUTRAL, (1)-GROUND.
1 1/2 HP. MOTOR 240 VOLTS 1 PHASE
50 CYCLE
11.5 AMPS RUN, 56 AMPS START
FUSE 15 AMP SLD BLD
30 AMP MAIN LINE FUSE

INCDA JOB #
DEALER P.O. #
DRAWING BY:
DATE:

DRAWING IDENTIFICATION NUMBER

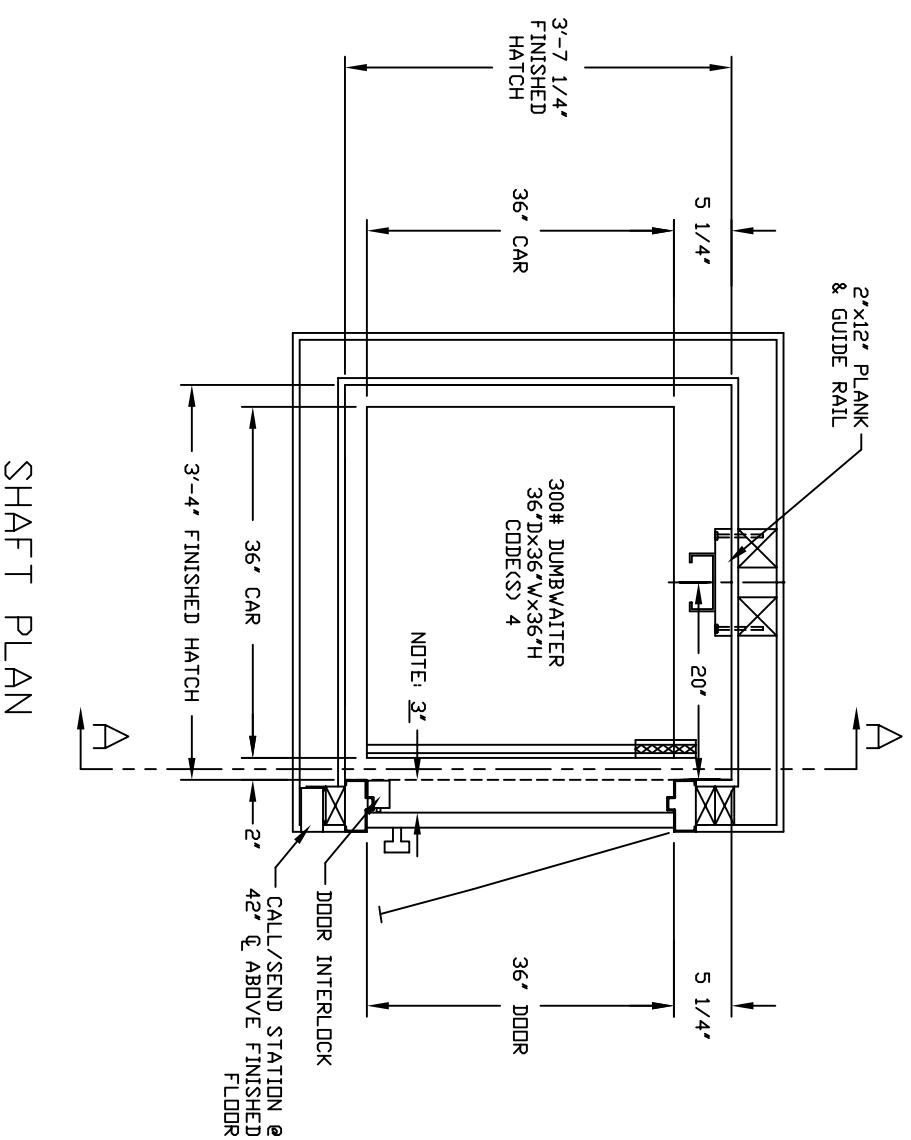


SHEETROCK
2"x4" WOOD STUDS
NOTE:
WHEN STUD AND SHEETROCK CONSTRUCTION
IS USED ON THE GUIDE RAIL SUPPORT WALL
DOUBLE STUDDING IS NEEDED BEHIND THE
2"x12" PLANK.
COUNTERSINK LAGS
2"x12" PLANK
DETAIL "A"

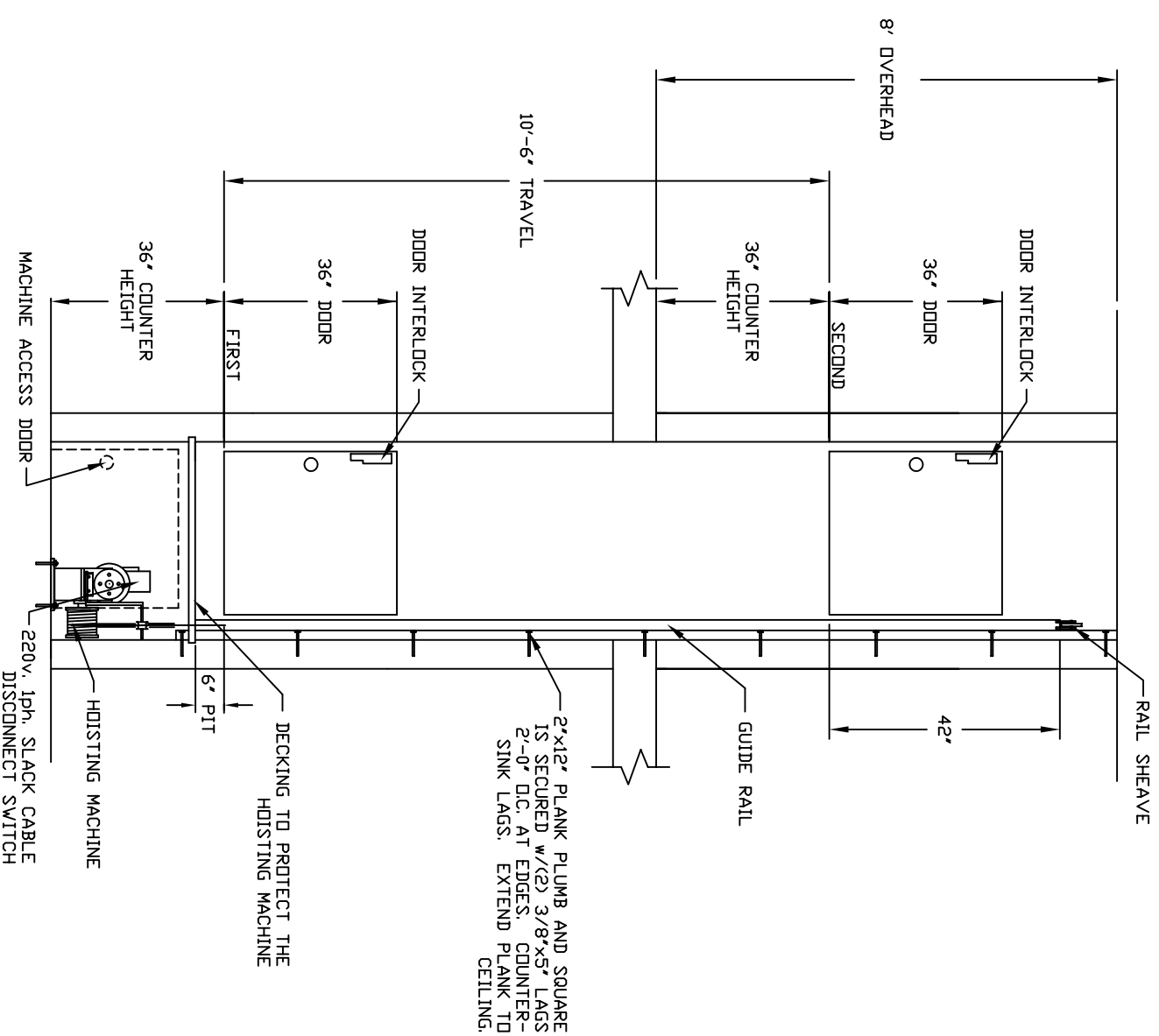


DOOR FRAME DETAIL

- TECHNICAL DATA:**
1. REACTIONS ON ALL SHEAVES AND MOUNTINGS
STATIC = 1,100 LBS.
IMPACT = 2,200 LBS.
 2. RAIL FASTENING TO 2" x 12" PLANK
#14 x 1 3/4" TYPE A S.M.S. RAIL IS PRE-
DRILLED AT FACTORY.
 3. BOLT FASTENING OF CAR TO TROLLEY
1/2" - 13 x 4" SOCKET HD CAP SCREWS.



SHAFT PLAN



SECTION A-A