

SHOP DRAWING NAME

TYPICAL

ARCHITECT

GENERAL CONTRACTOR

EQUIPMENT INSTALLED BY

TYPICAL

SPECIFICATIONS

2 LANDING
200# DUMBWAITER

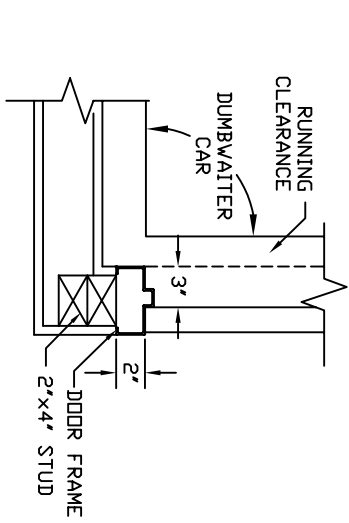
CAR SIZE 30"Dx30"Wx30"H OVERALL
CAR CONSTRUCTION - AUTO STEEL
COLOR SELECTION - BEIGE
CAPACITY 200 LBS. AT 35 F.P.M.
1 WIRE ROPE 5700 LBS. T.S. IMP. PLOW
1/4" x 8 x 19 WSC

- LIGHT IN CAR
- SHELF IN CAR (ADJUSTABLE)
- COLLAPSIBLE GATE
- LIP ON CAR
- IN USE LIGHTS
- ARRIVAL LIGHTS
- LIGHTED BUTTONS
- KEYSWITCH OPERATION
- DDOOR OPEN ALARM
- ARRIVAL GONG
- STEEL FLOOR
- WHITE FORMICA FLOOR
- STABILIZER
- HOMING DEVICE
- TIME DELAY RELAY
- KNOCK-DOWN CONSTRUCTION

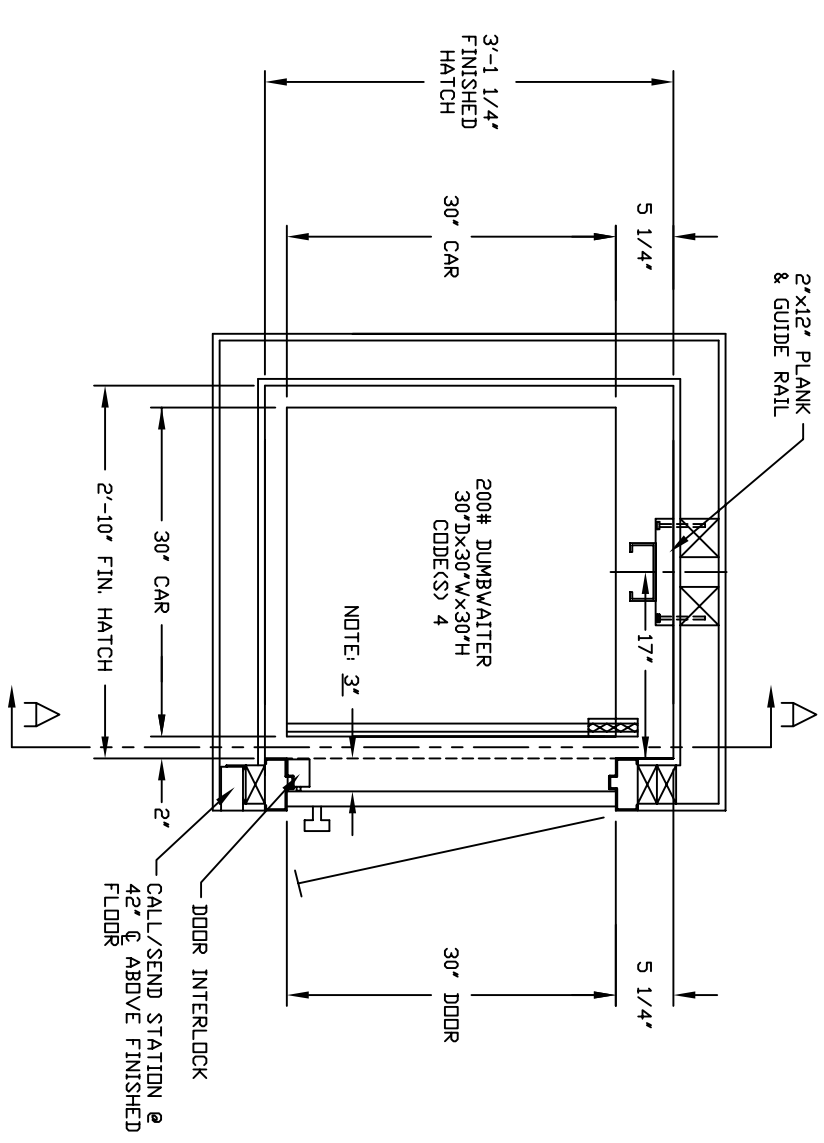
NOTE TO ELECTRICAL CONTRACTOR:
BRING 4 #10 WIRES TO DISCONNECT SWITCH + GROUND) (2)120 (240 PWR), (1)120V(LIGHT), (1)NEUTRAL
1/2 H.P. MOTOR 220 VOLTS 1 PHASE
60 CYCLE
80 AMPS RUN, 40 AMPS START
FUSE 15 AMP SLD BLD
20 AMP MAIN LINE FUSE

APPROVAL #
INCLDA JOB #
DEALER P.O. #
DRAWING BY:
DATE:

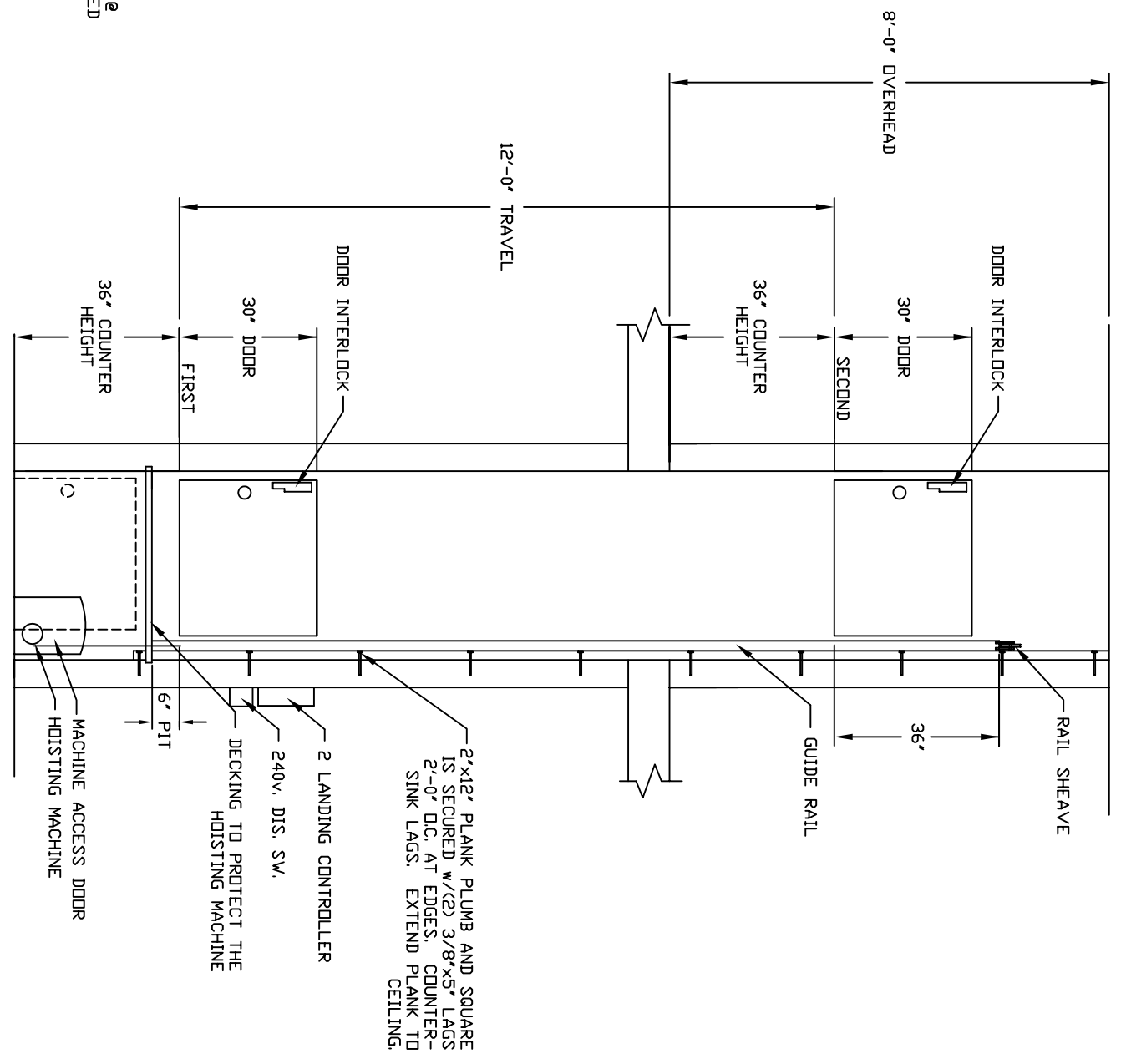
DRAWING IDENTIFICATION NUMBER



DOOR FRAME DETAIL



SHAFT PLAN



SECTION A-A